

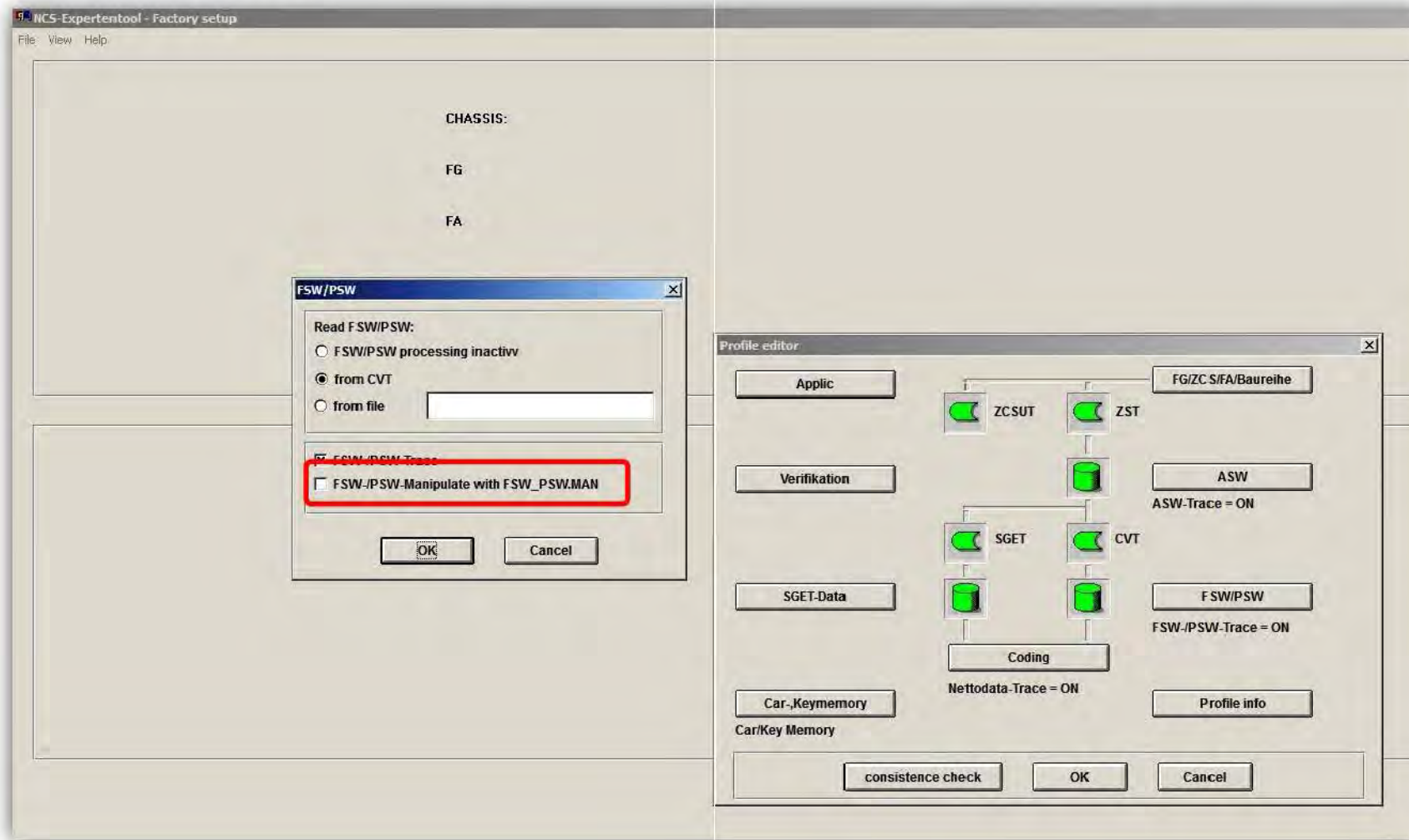
DIY : Coding factory setting for any ECU using NCS

1- Open NCS , Choose Expertmode Profile

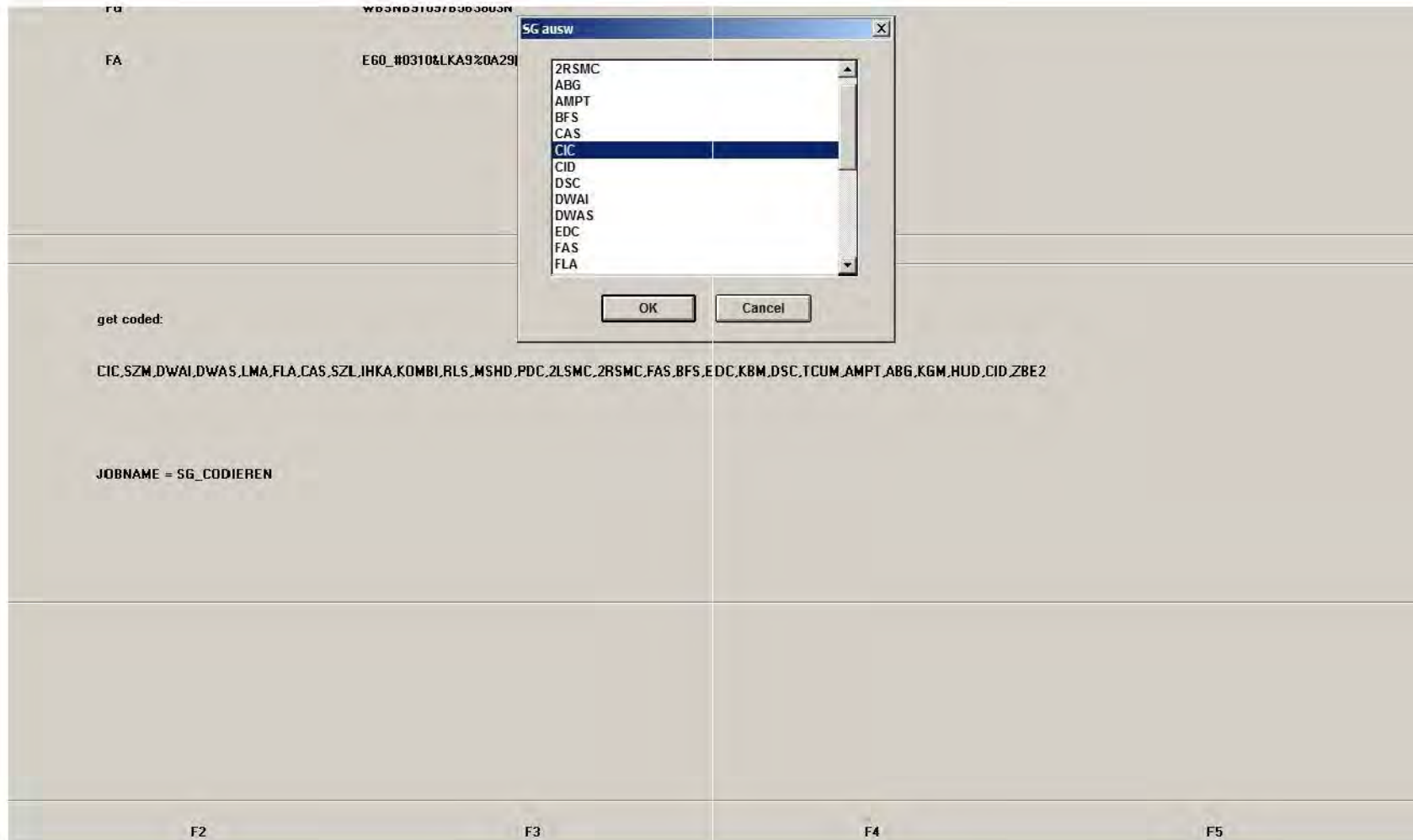
if you don't have Expertmode profile , Load the profile you are always using then click File -> Edit profil -> FSW/PSW

and uncheck the option in the red box -> Click OK -> Click Profile info -> check the Profil name to any name you prefer -> click OK ->

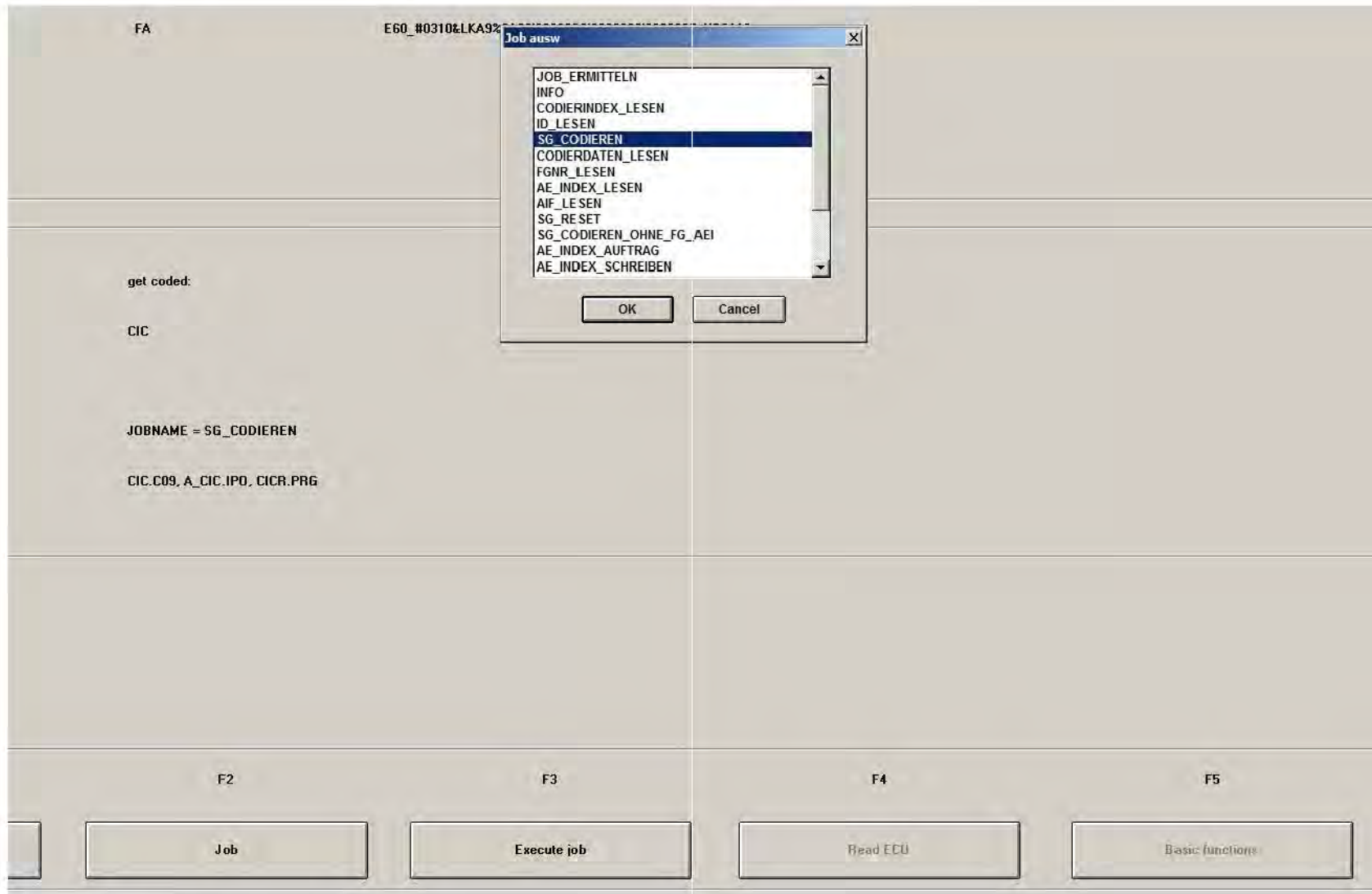
Click OK to close the profile editor -> click File -> save profile as -> give it any name you like , and you have a profile for loading factory setting to any ECU in the car .



- 2- Press F1 -> F3 and choose your car chassis from the list -> press OK -> Press F6
- 3- Press F4 -> choose the ECU you would like to code with factory default options of your car -> Press OK



- 4- Press F2 -> choose " SG_CODIEREN" -> press OK
- 5- Press F3 to start coding the ECU with the factory setting according to your VO ,



Mission accomplished .