

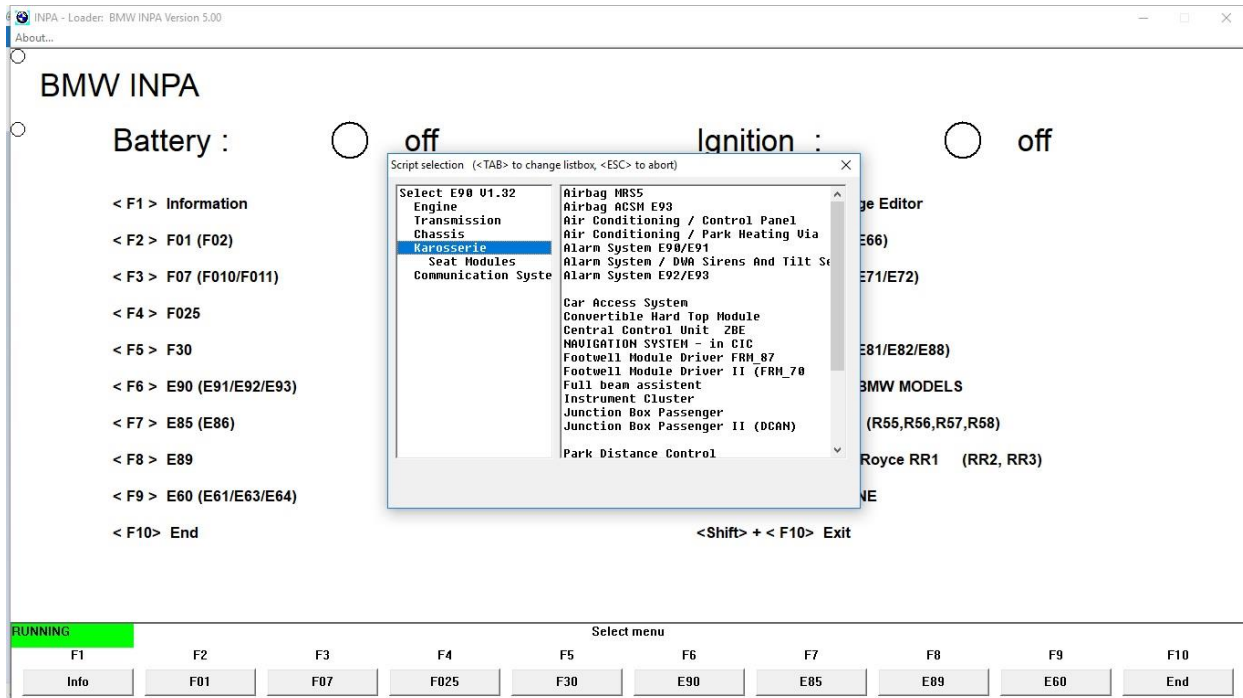
IHKA, Climate Control, Module (ADR 78)

INPA Tutorial

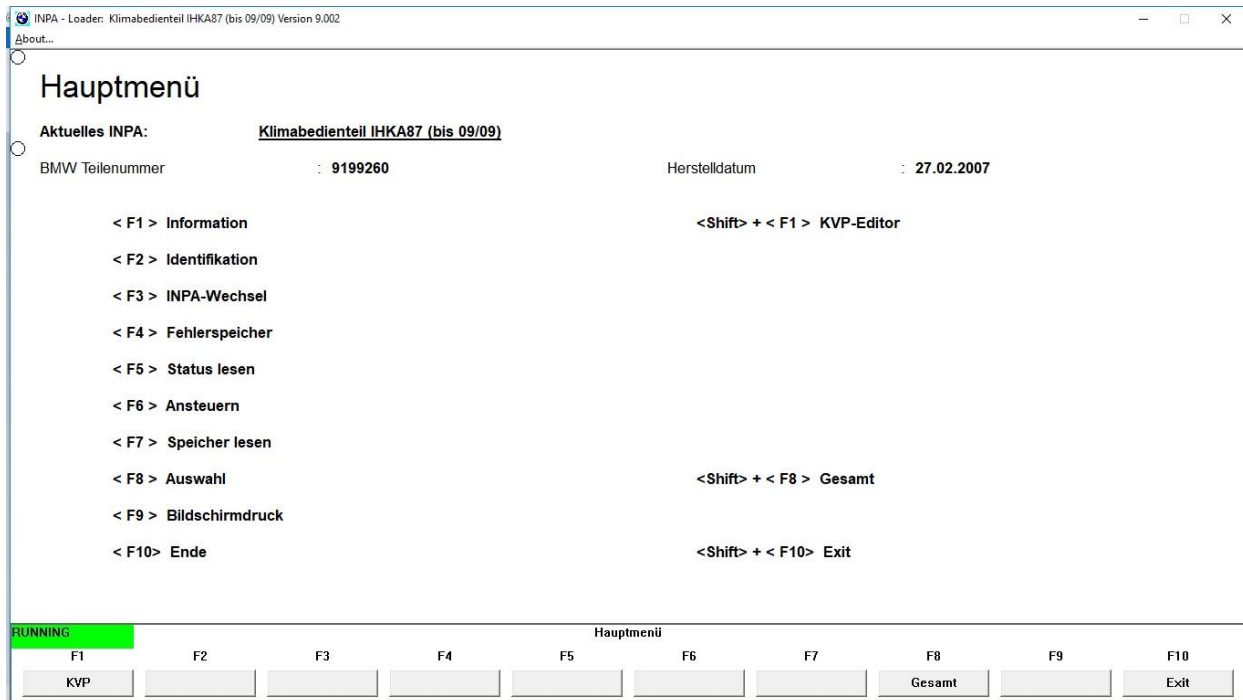
I. Connecting to IHKA Module:

A. Connect: Body (Karosserie) / Air Conditioning / Control Panel:

After selecting “E90” in opening screen (F-key varies among INPA versions), in LEFT Listbox, Scroll/Arrow down to “Body/Karosserie”, Press Tab to navigate to RIGHT Listbox, and Scroll/Arrow down to “Air Conditioning / Control Panel”; Press Enter; IHKA Main menu appears as shown in (B) below.

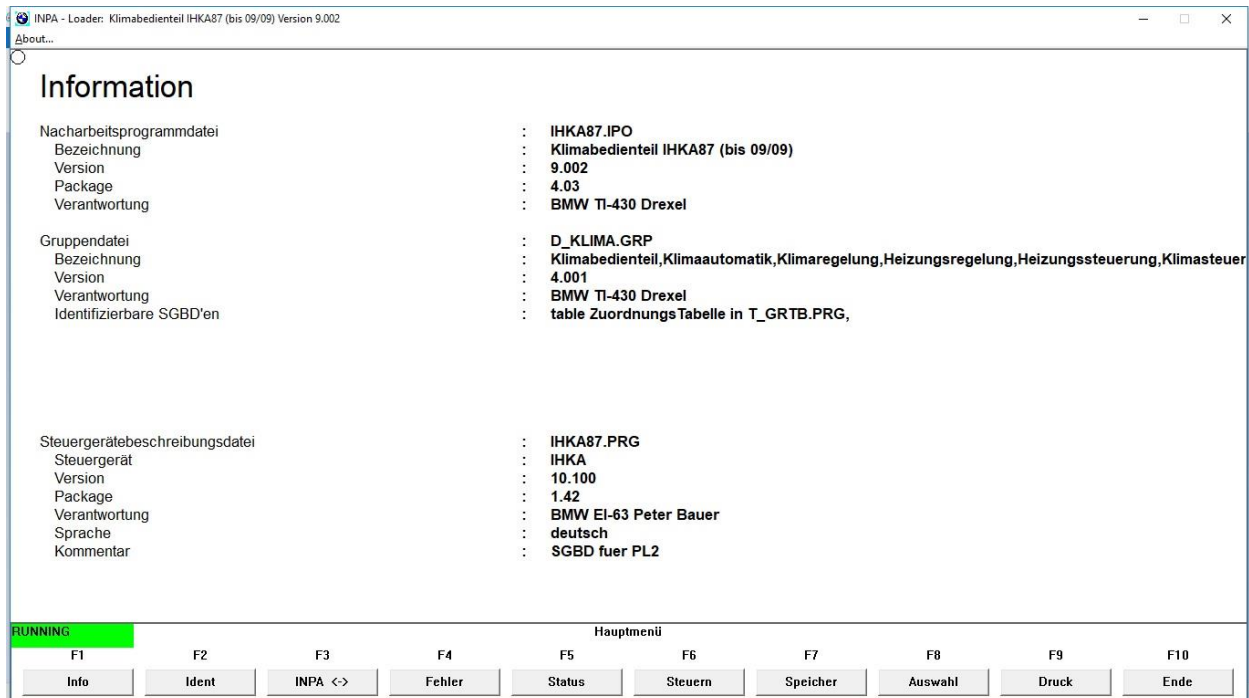


B. IHKA Main Menu:

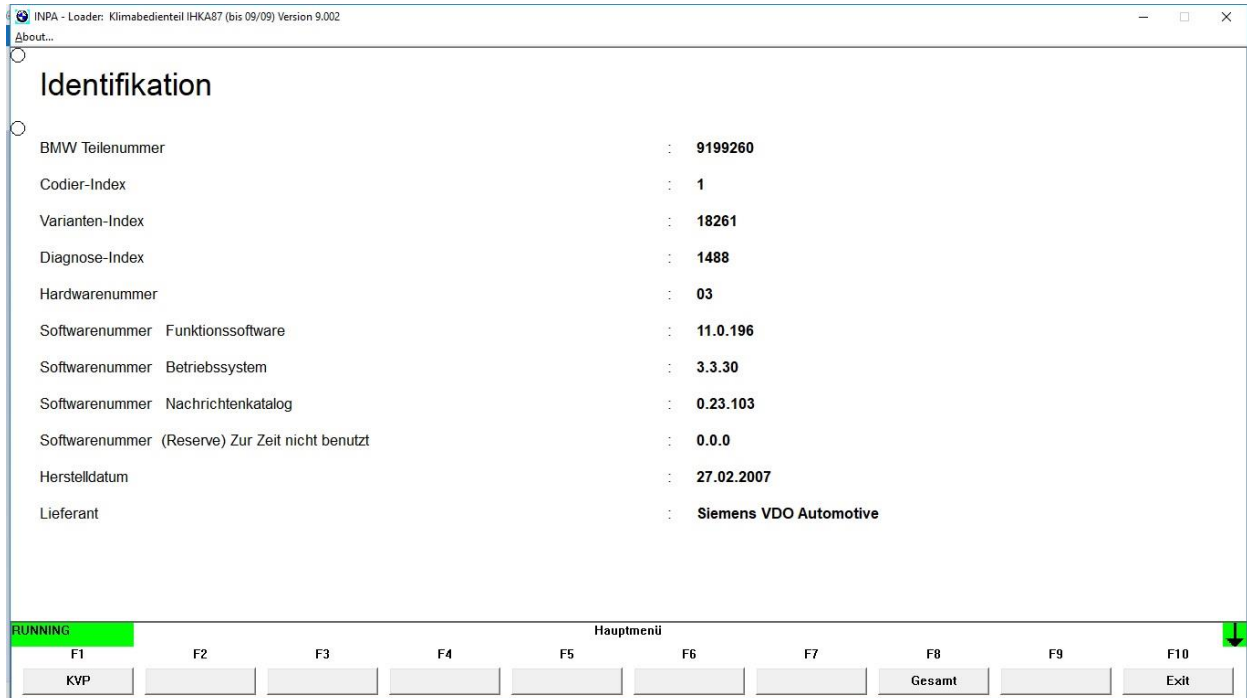


C. F1, Information:

Information & Identification screens (F1 & F2) give general Module Hardware & Software info

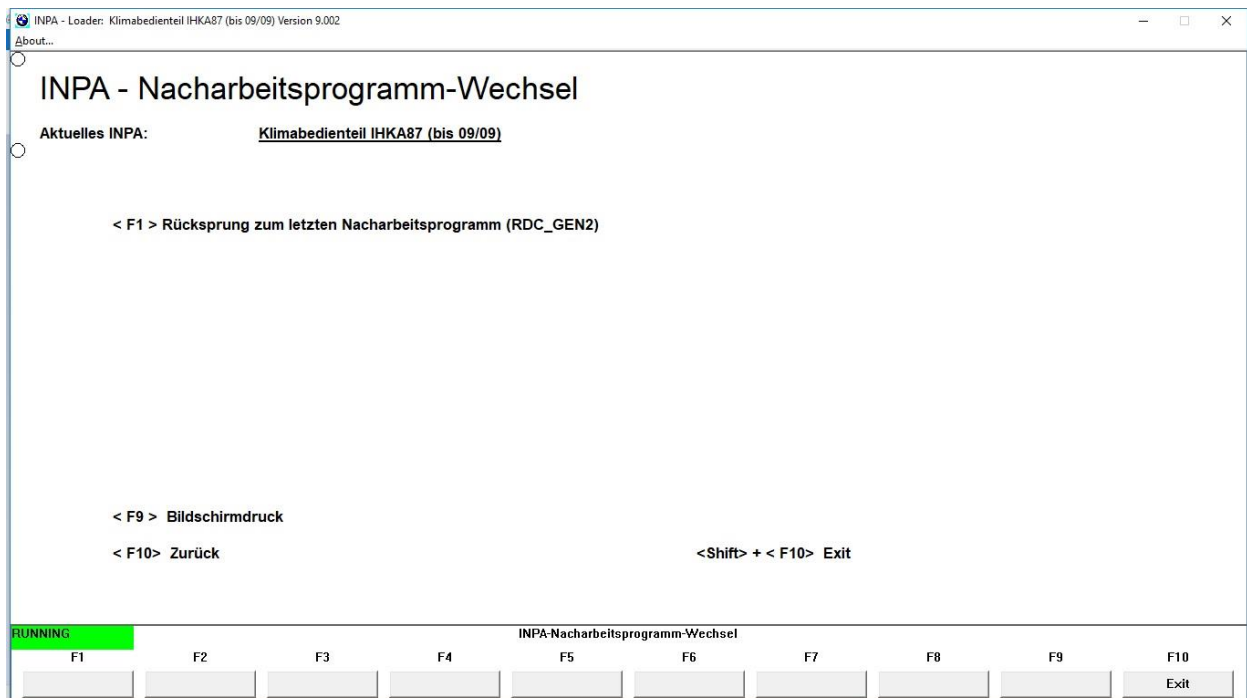


D. F2, Identification:



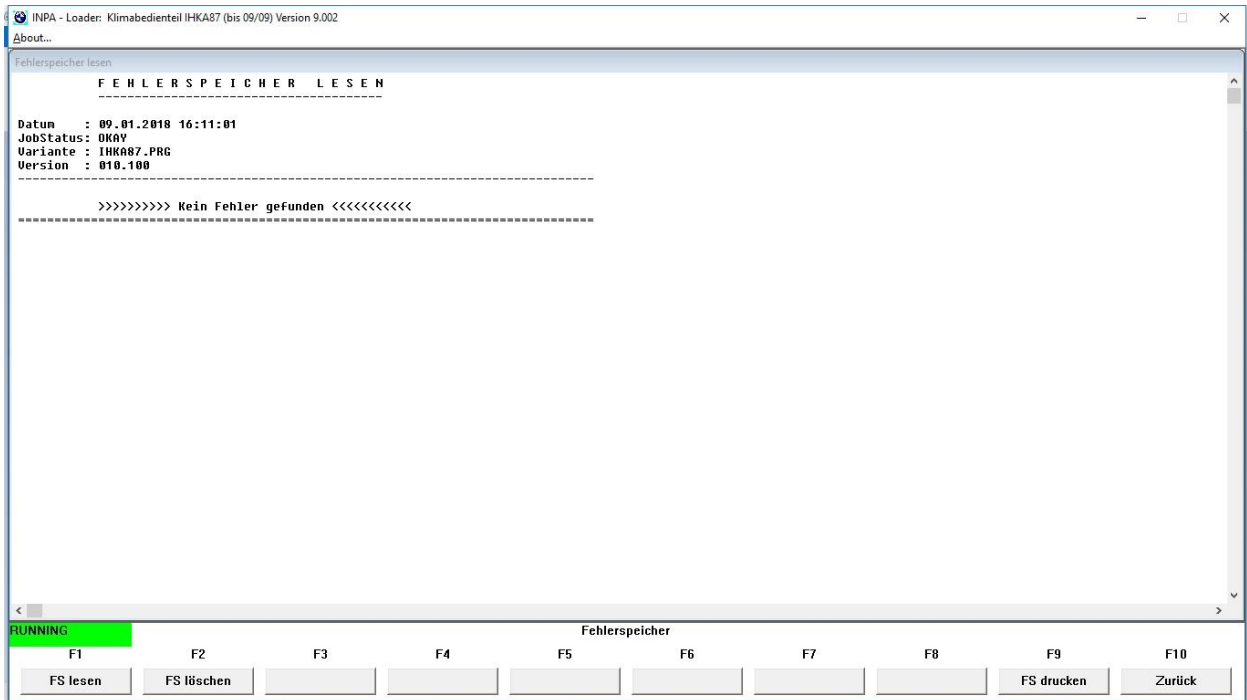
E. F3, Alternation or Exchange (Wechsel) with Prior Program:

Allows jumping between Modules; skip for now



F. F4, Fault Memory (Fehlerspeicher):

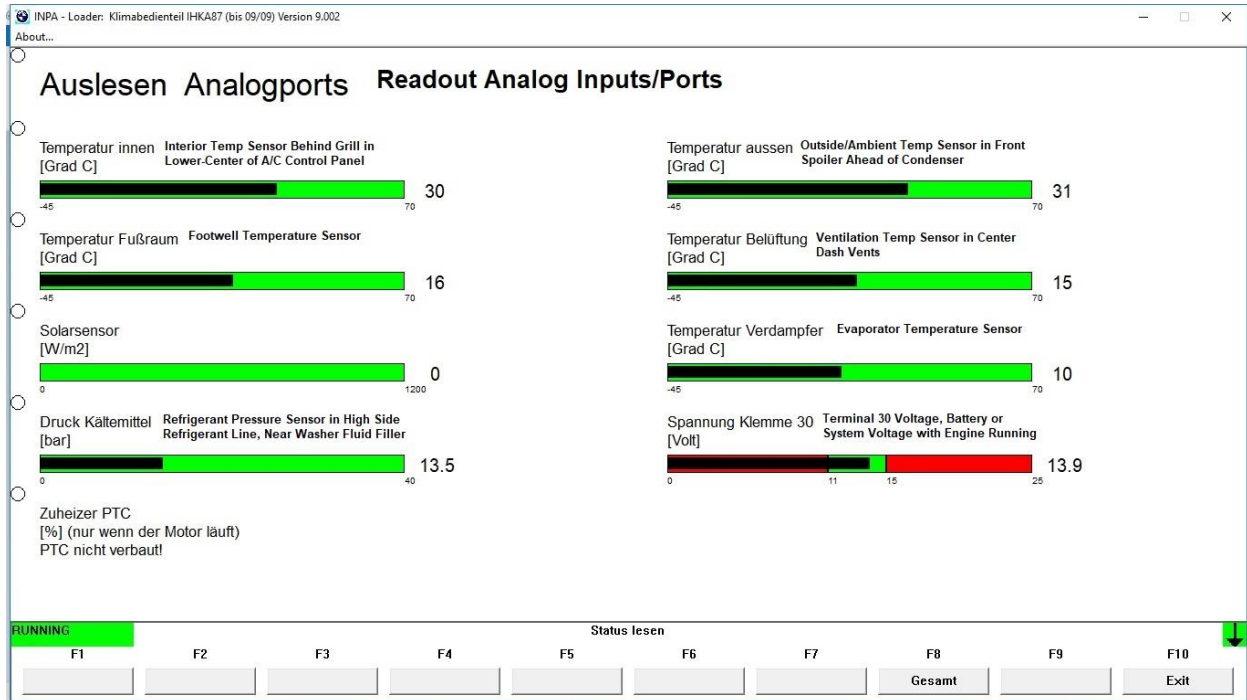
What you want to see: “Kein Fehler gefunden” = NO Fault found



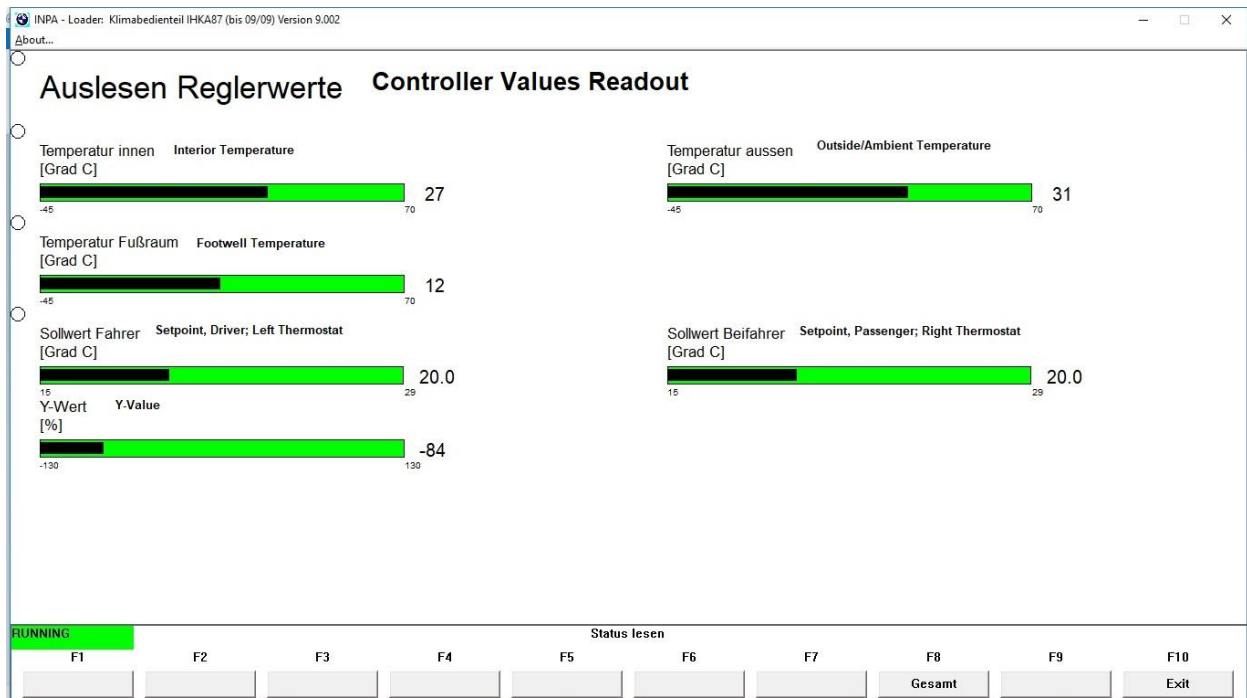
G. F5 Status; Control Panel Settings: 68F/20C, Auto, AUC; ENGLISH TRANSLATION:

My INPA version is mostly German; English “Sub-titles” added by me; use Google Translate

1. F5, F1, Analogport/Inputs Readout:

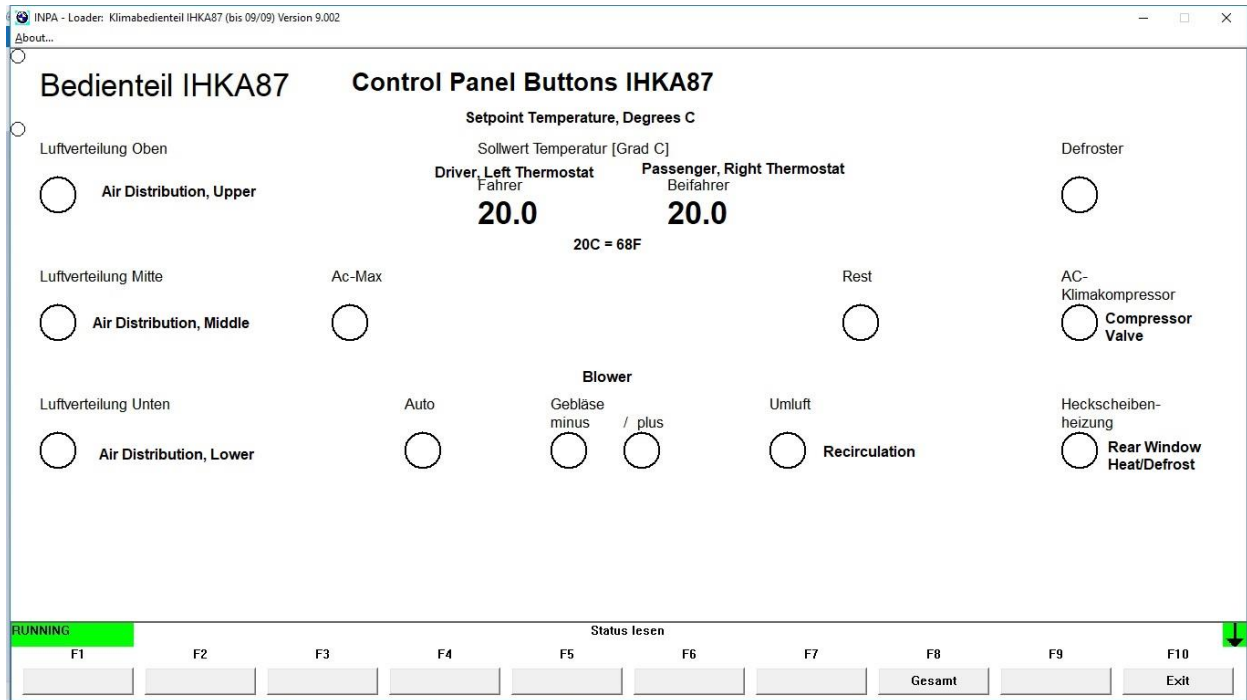


2. F5, F2, Controller Values Readout:



3. F5, F3, Control Panel Buttons, IHKA87:

White circle “Fills”/Black ONLY as long as you press button. Button test ONLY, NOT position



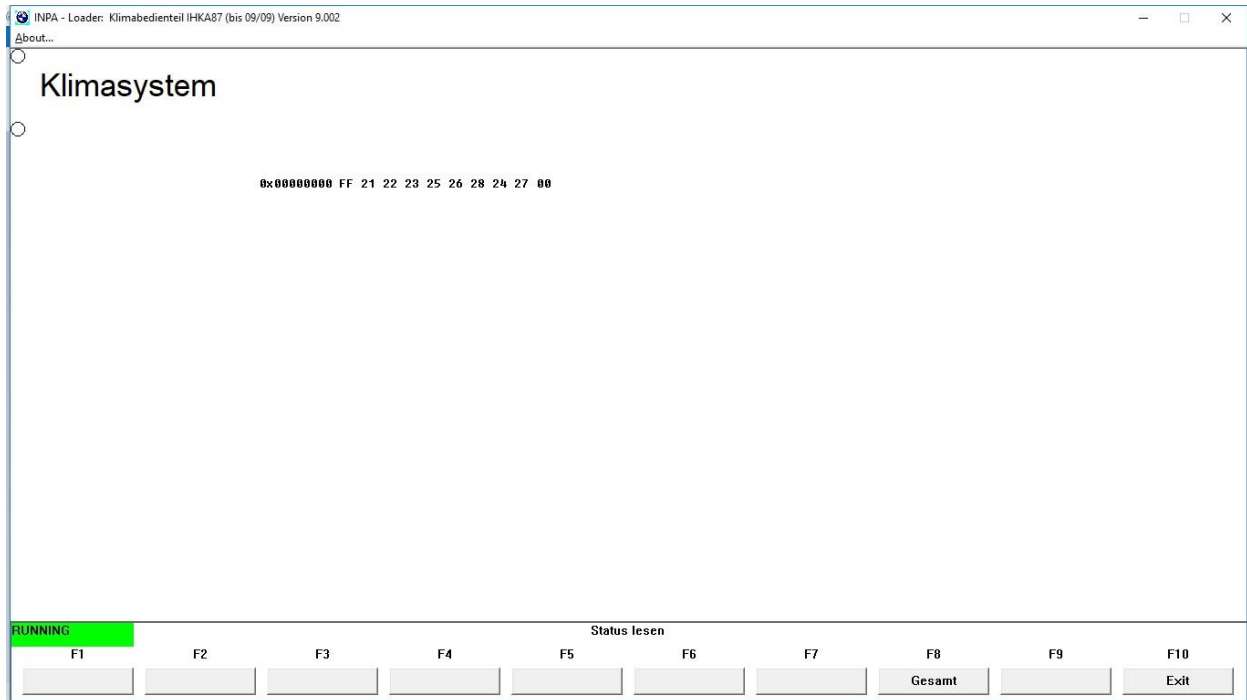
4. F5, F4, Flap Positions:

Observe position, test movement of Eight (8) Flaps in IHKA System; Left & Right Mixed Air Flaps direct cooled air through heater core to regulate delivery Temp EXCEPT in MAX Setting.



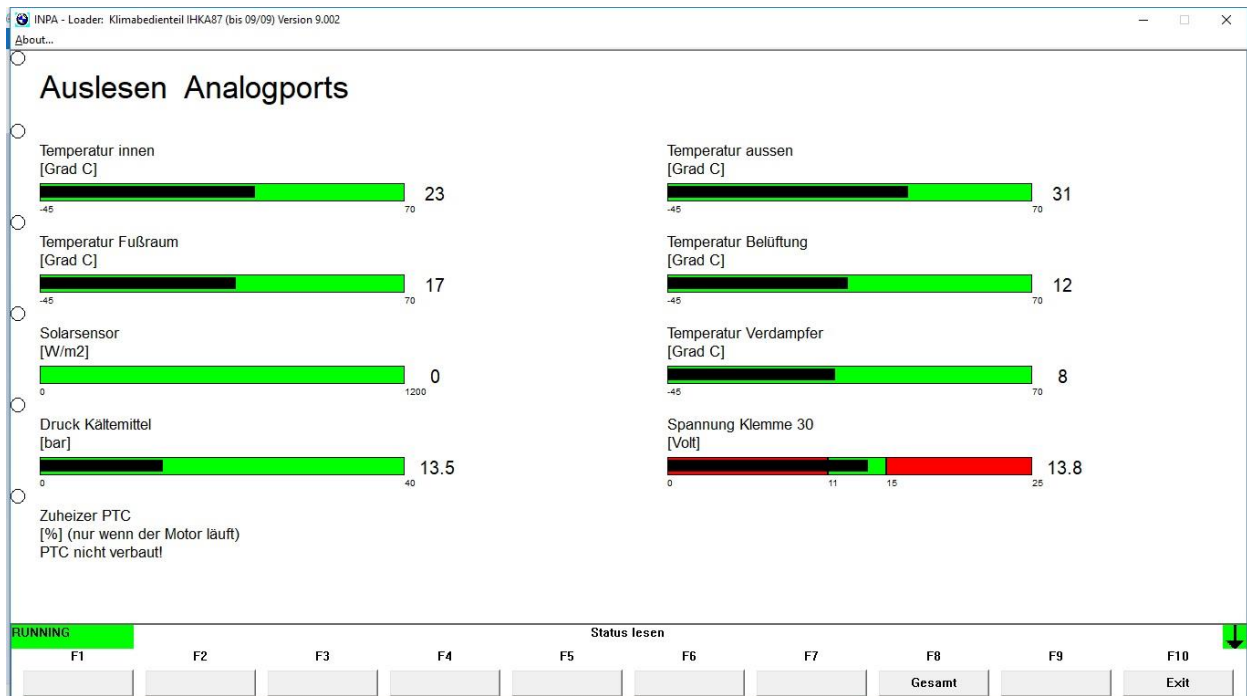
5. F5, F5, Klimasystem:

Use & significance of this screen is unknown to me

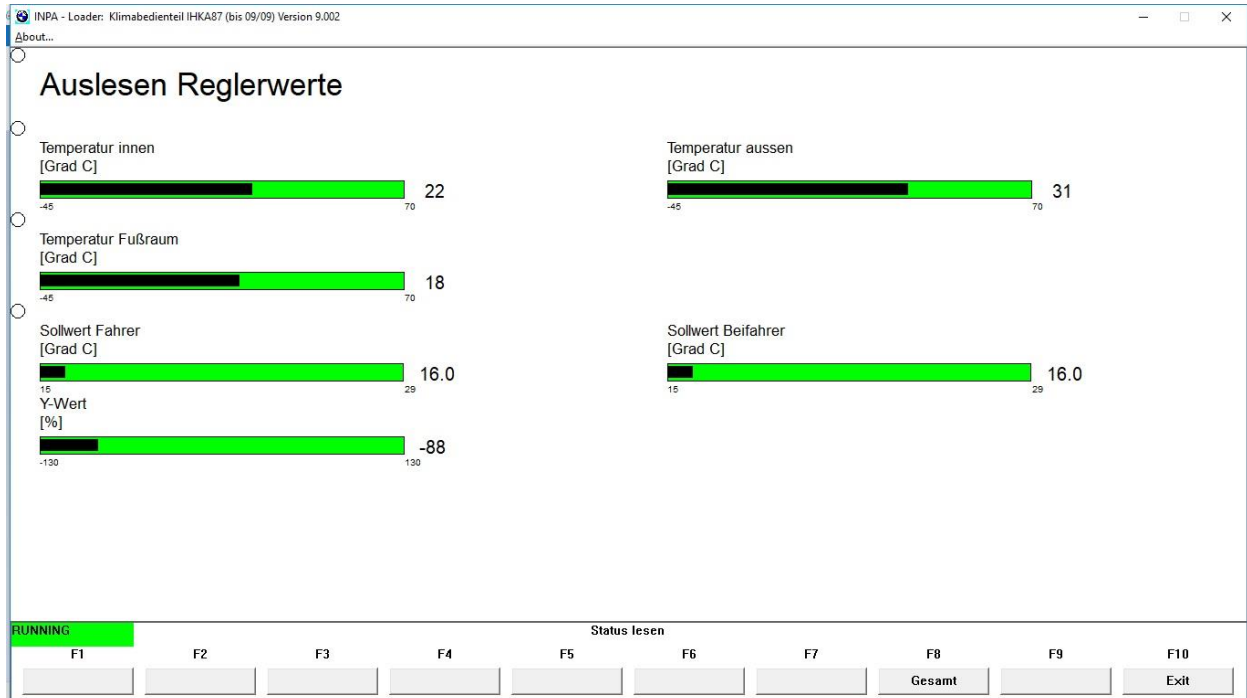


H. F5, Status; Settings: MAX Button Pressed (otherwise same as “G” above):

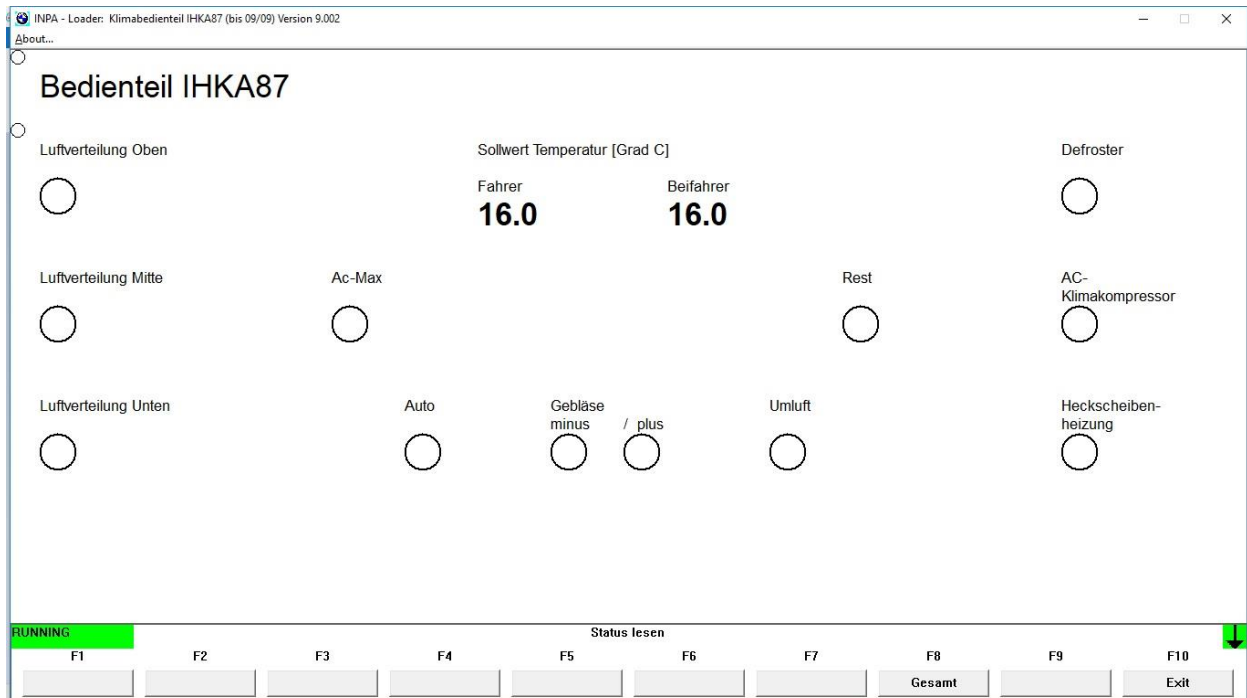
1. F5, F1, Analogports:



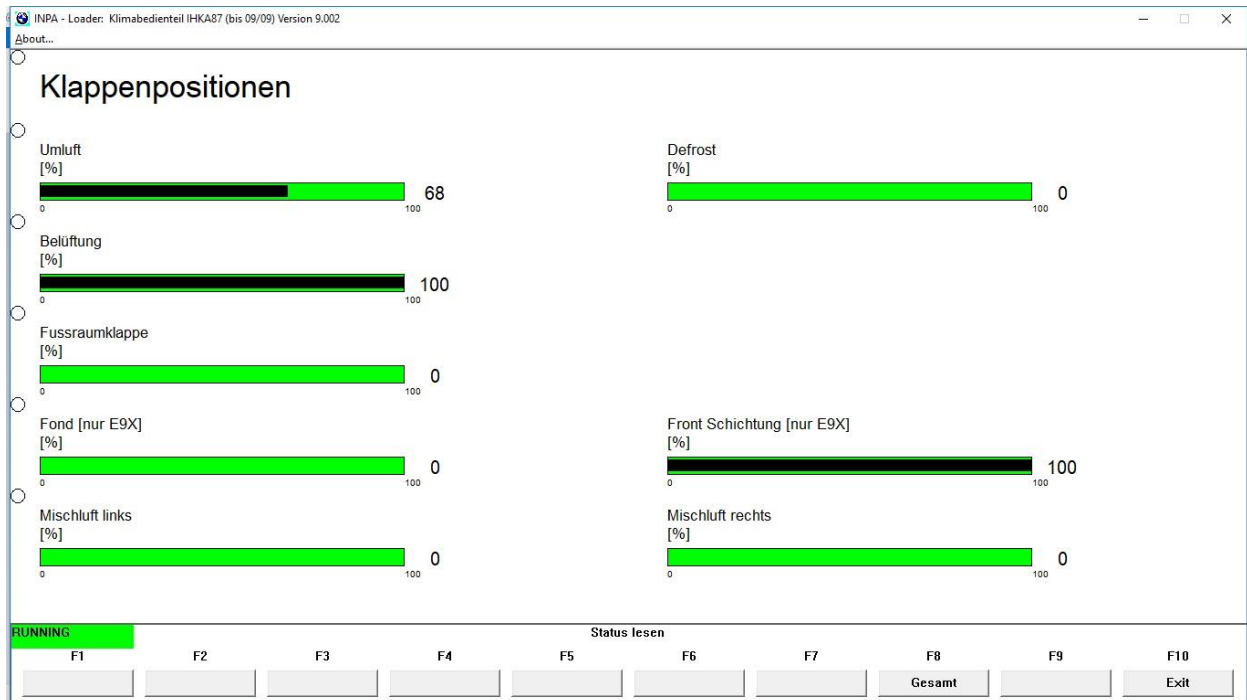
2. F5, F2, Reglerwerte:



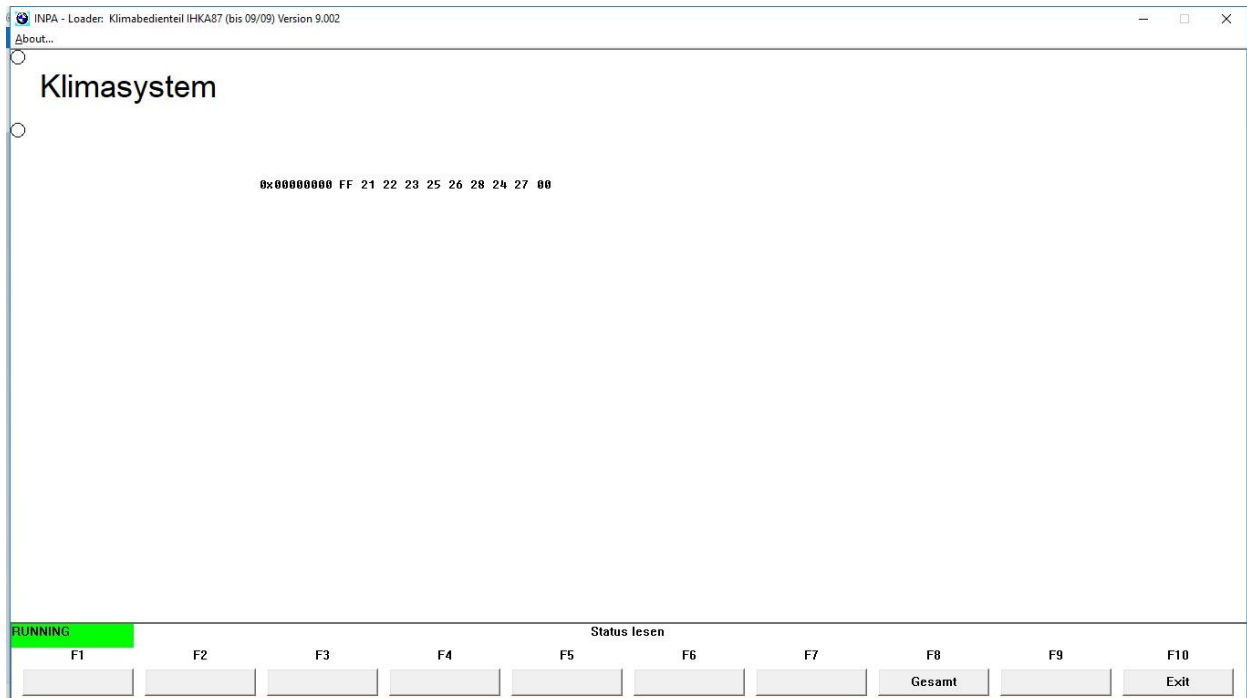
3. F5, F3, Bedienteil:



4. F5, F4, Flap Positions:



5. F5, F5, Klimasystem:



II. Appendix:

A. Google Translate, German to English:

<https://translate.google.com/#view=home&op=translate&sl=de&tl=en>

B. TIS IHKA Functions:

https://www.newtis.info/tisv2/a/en/e91-328xi-tou_200703/wiring-functional-info/body/heating-air-conditioning-functions/air-distribution/xBm37Oo

C. Ventilation Temp Sensor & Footwell Temp Sensor, Installation Locations:

B62 Ventilation Temp Sensor; B109a Footwell Temp Sensor:

https://www.newtis.info/tisv2/a/en/e91-328xi-tou_200703/R1vuHsC

D. Evaporator Temp Sensor (B14a) Installation Location:

https://www.newtis.info/tisv2/a/en/e91-328xi-tou_200703/RCGiHpK

E. Refrigerant Pressure Sensor (B8) Installation Location:

https://www.newtis.info/tisv2/a/en/e91-328xi-tou_200703/FuxqKVd5