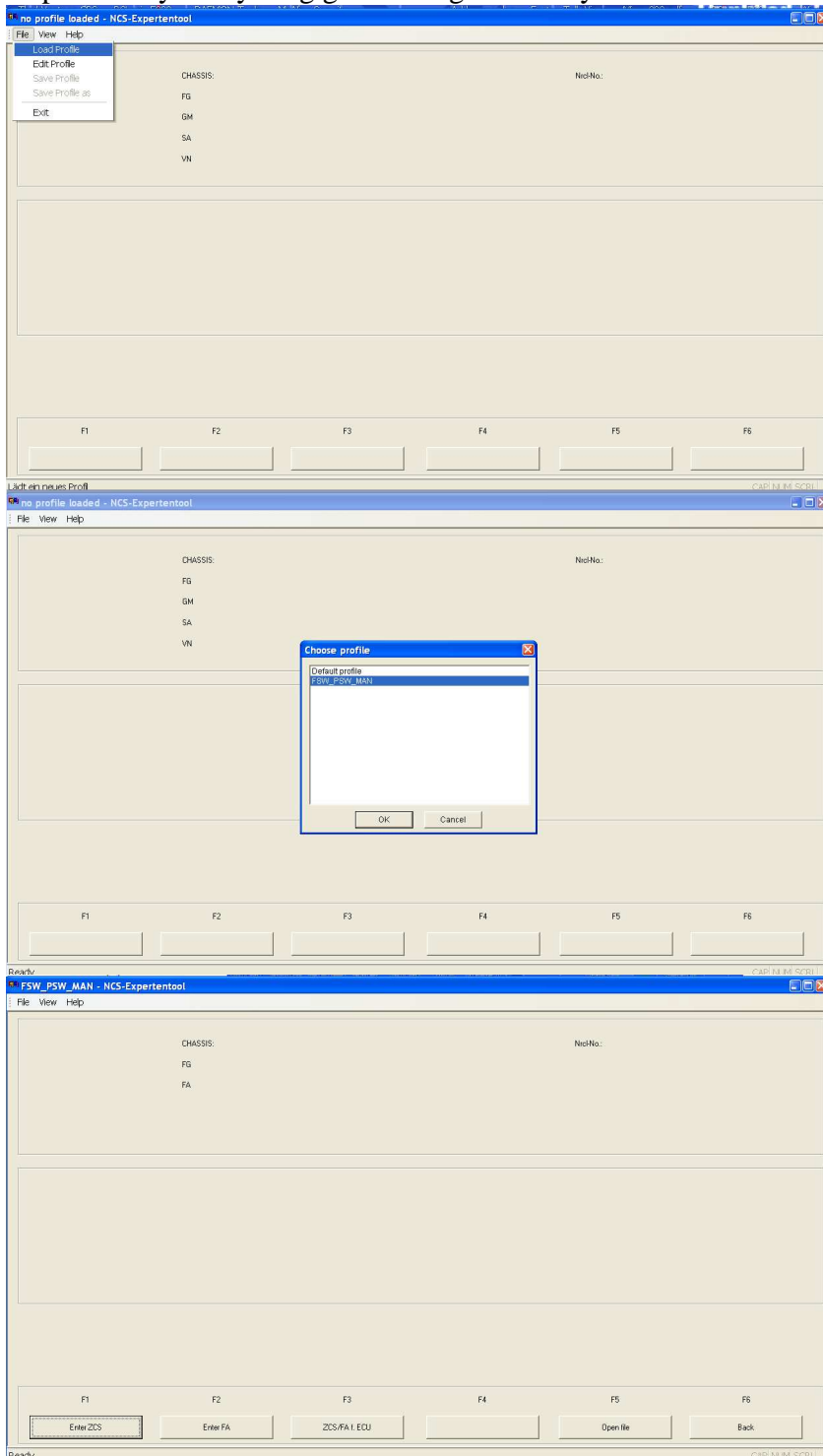
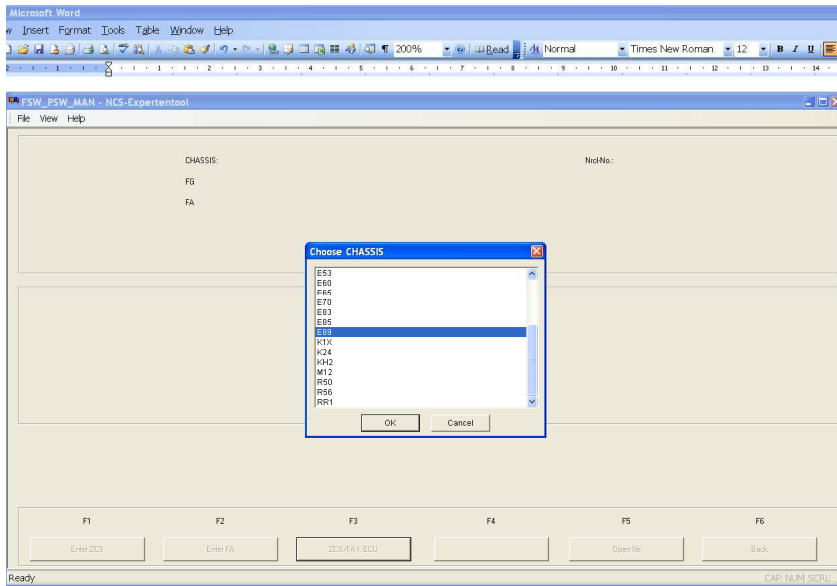


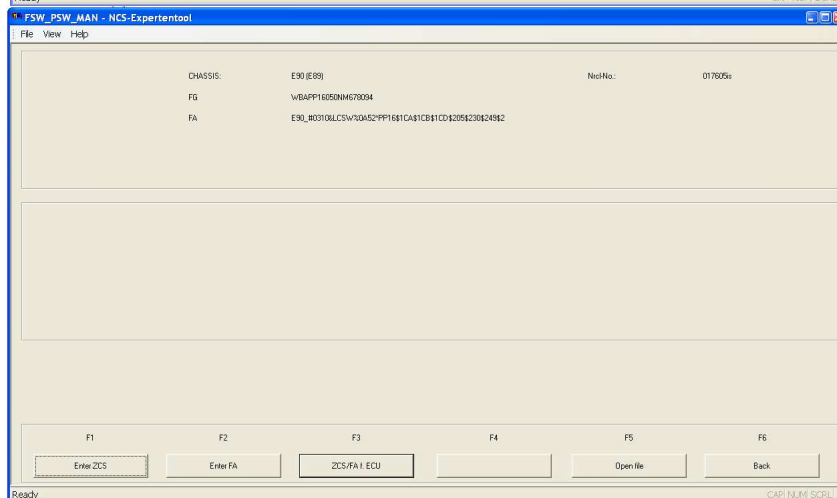
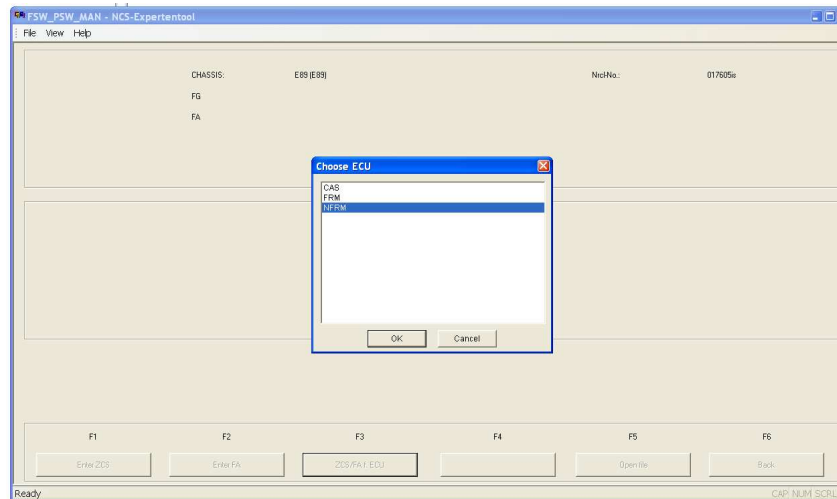
I am no expert on this. This is what worked for me. Please note I do not take any responsibility if anything goes wrong. Do it at your own risk.



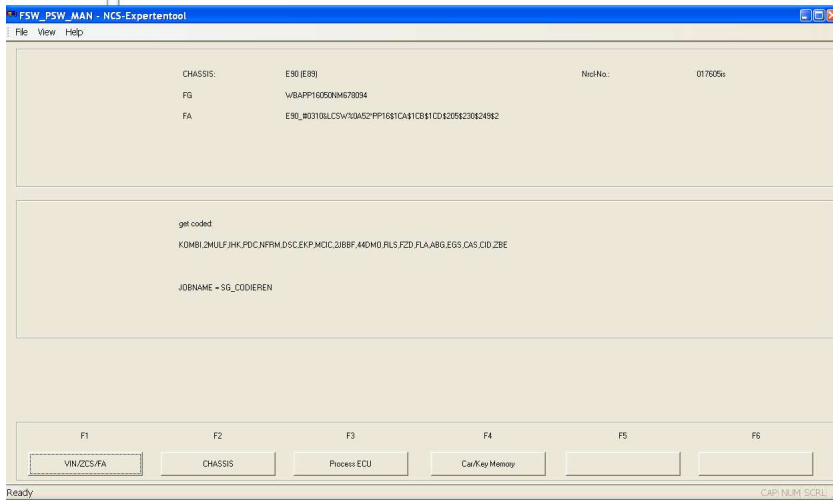
F1 then F3  
Select Chassis



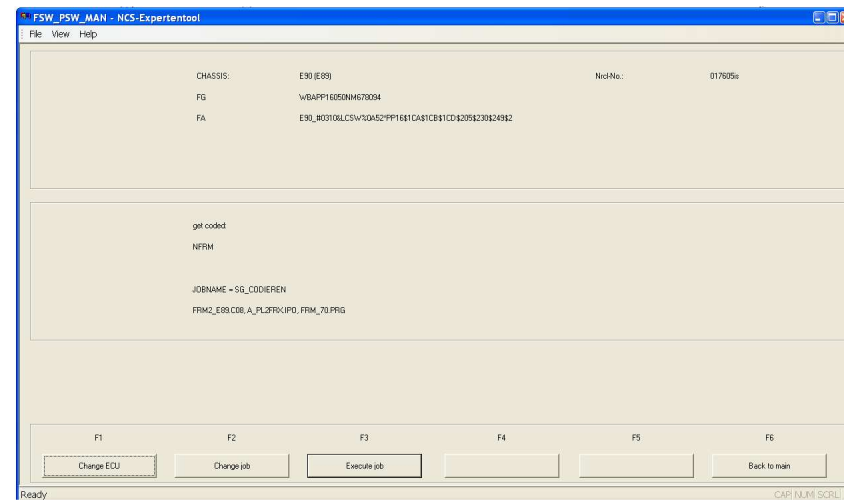
### Select NFRM module



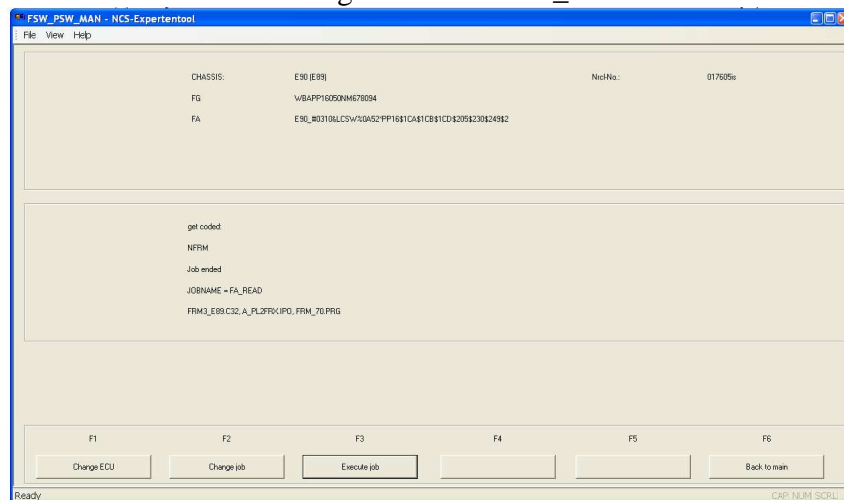
F6 to read from the module



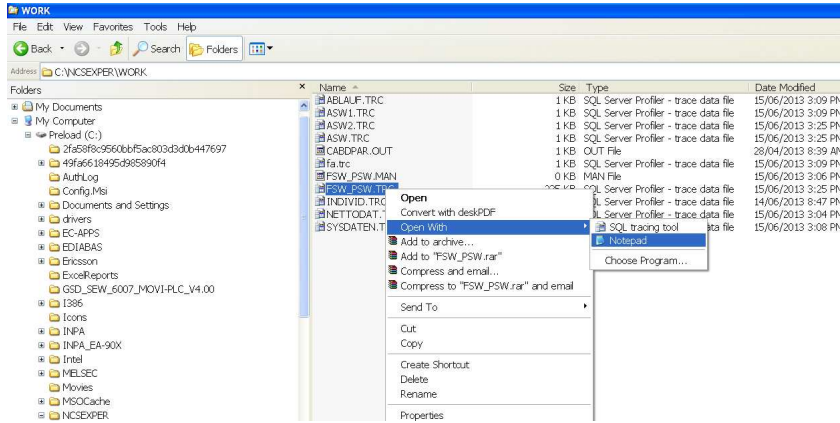
### F3 Process ECU



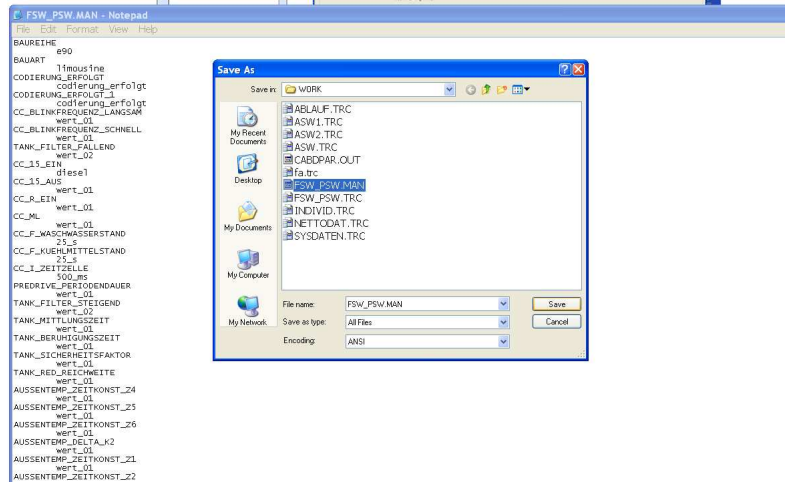
F2 change job to find out which file you need to code.  
 There is one screen missing here. Select FA\_READ



Then F3 to Execute. **Make sure the JOBNAME is FA\_READ**  
 So I need to edit FRM3\_E89.C32 with NCSdummy



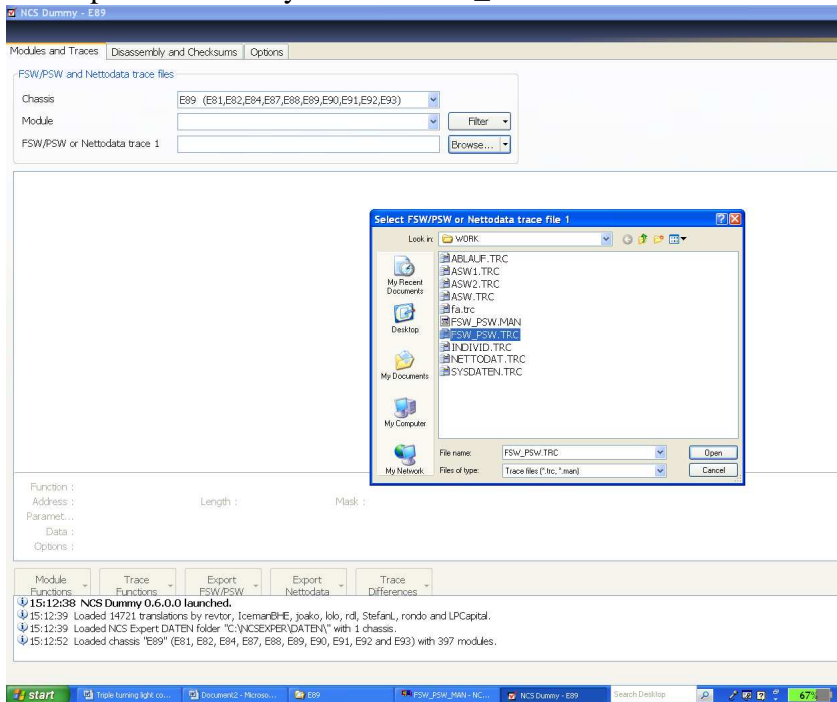
Open the FSW\_PSW.TRC in ncsexpert/work folder with notepad



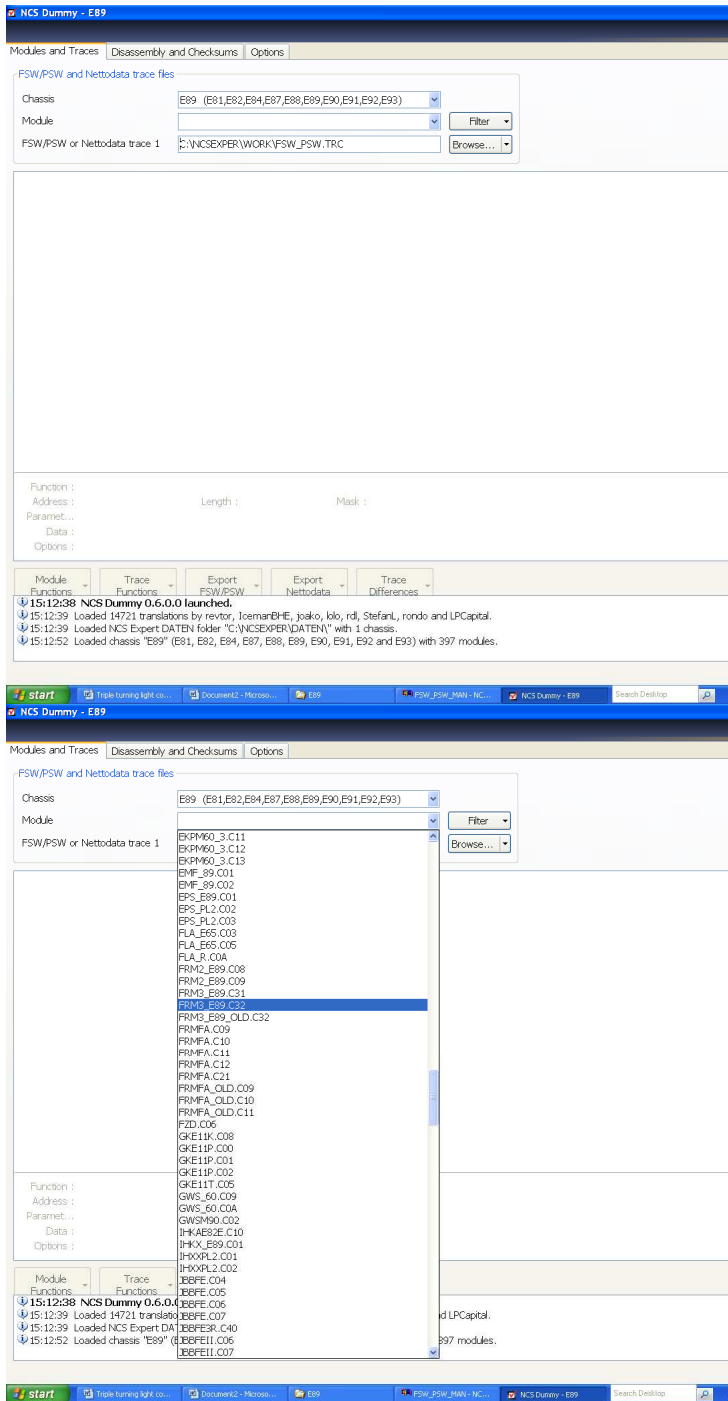
Then save as FSW\_PSW.MAN

Make sure Save as type is selected to All Files

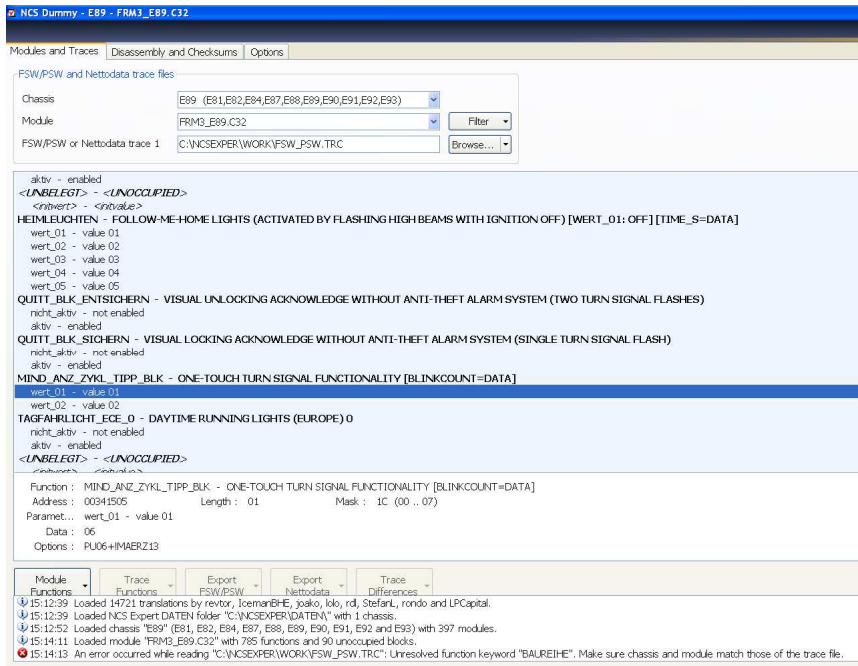
Now open NCSdummy to edit FRM3\_E89.C32



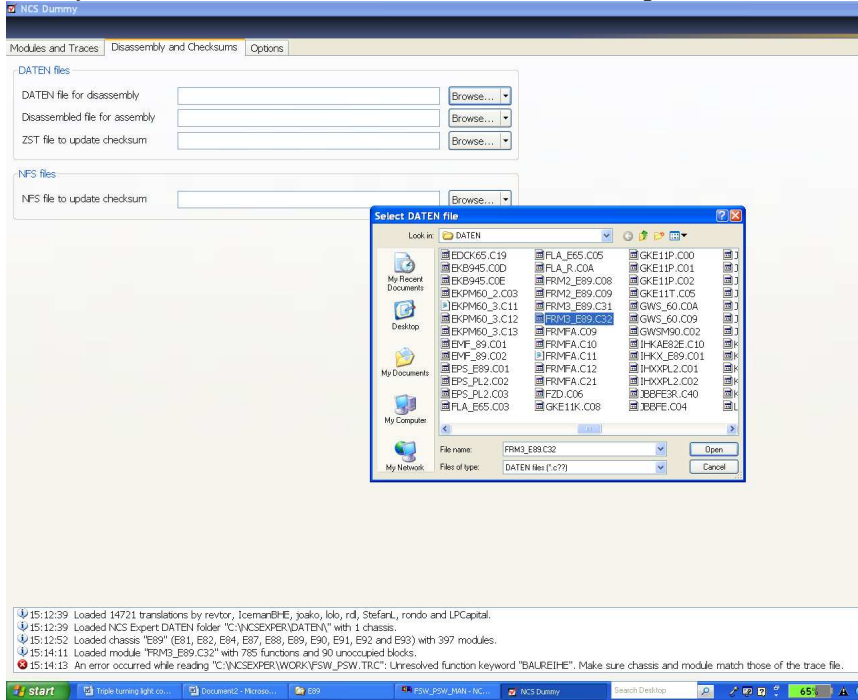
Browse FSW\_PSW.TRC in ncsexpert/work folder



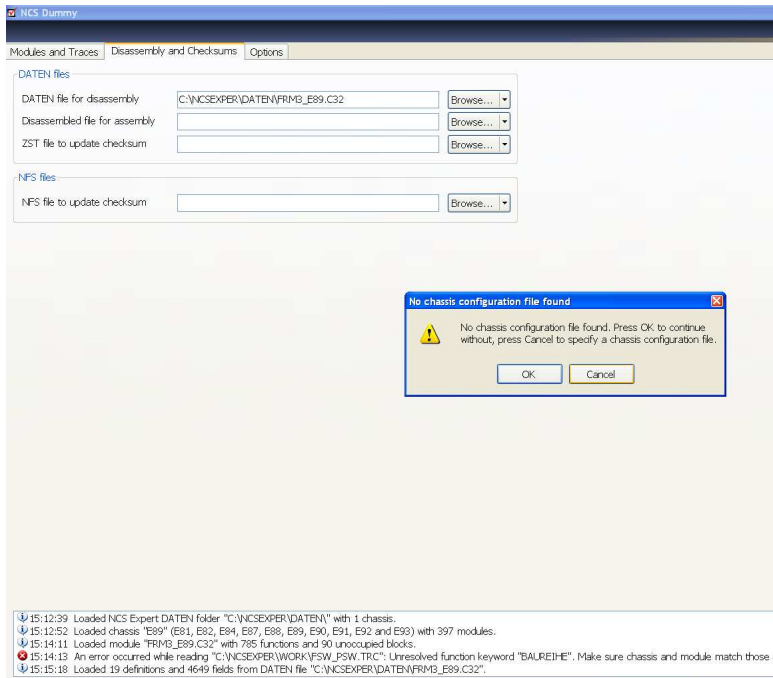
Then select FRM3\_E89.C32



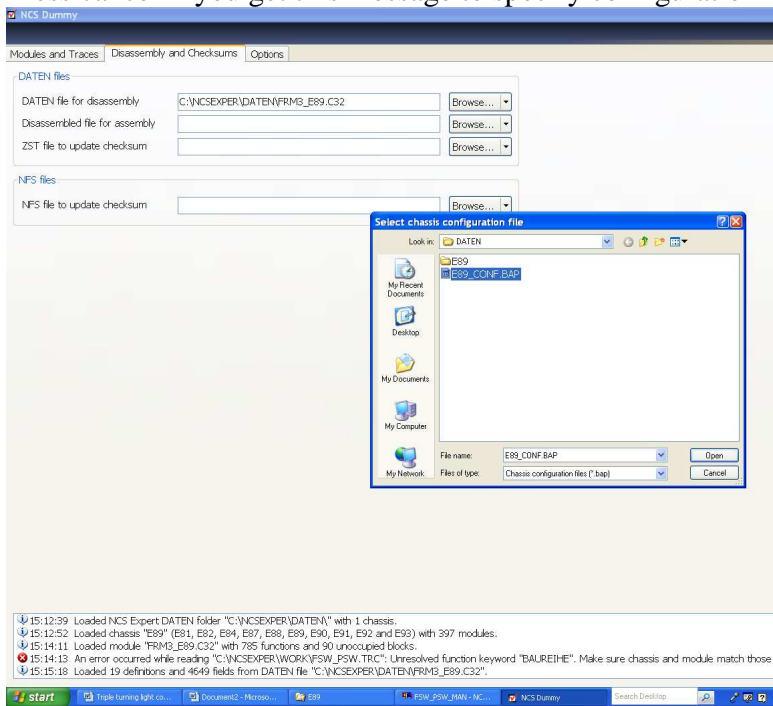
Now you can see MIND\_ANZ\_ZYKL\_TPP\_BLK parameter is there



Select the daten file in NcsExpert/Daten folder to disassemble, So you can edit the blink count with notepad.

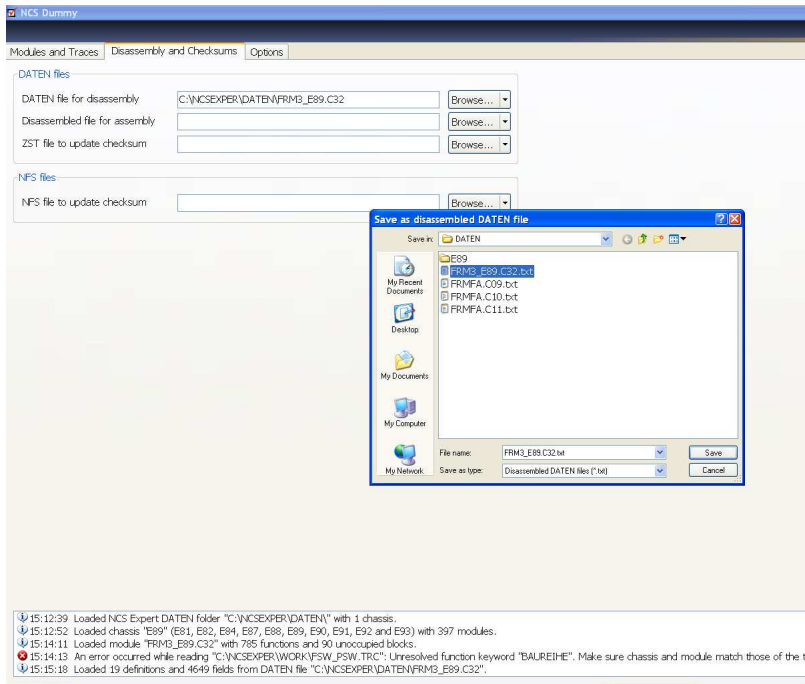


Press cancel if you get this message to specify configuration file.

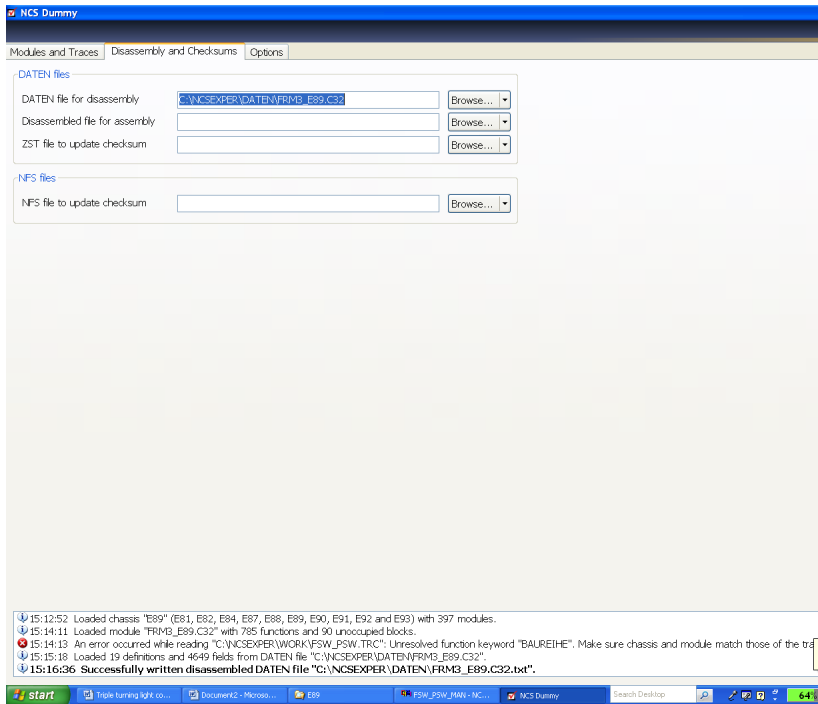


Select the configuration file. Open

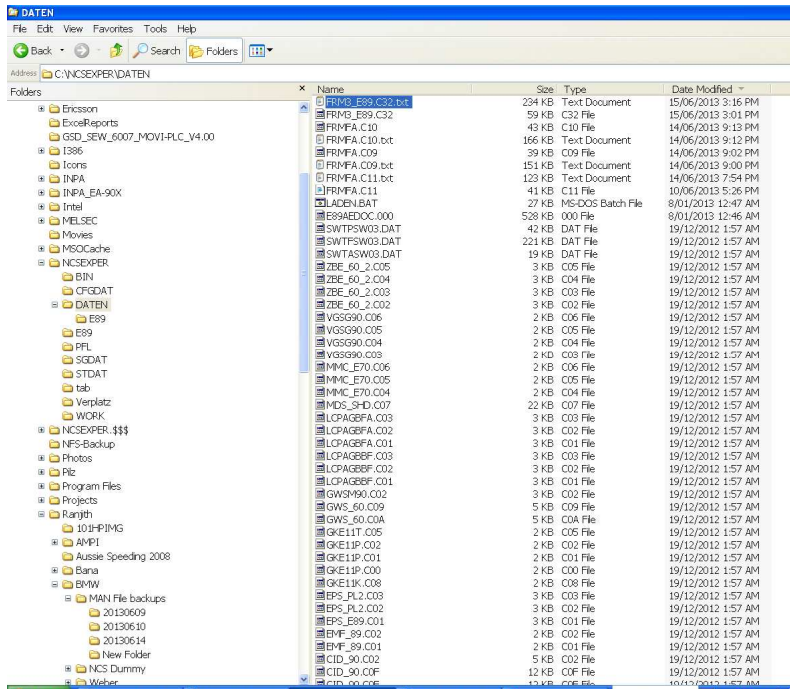




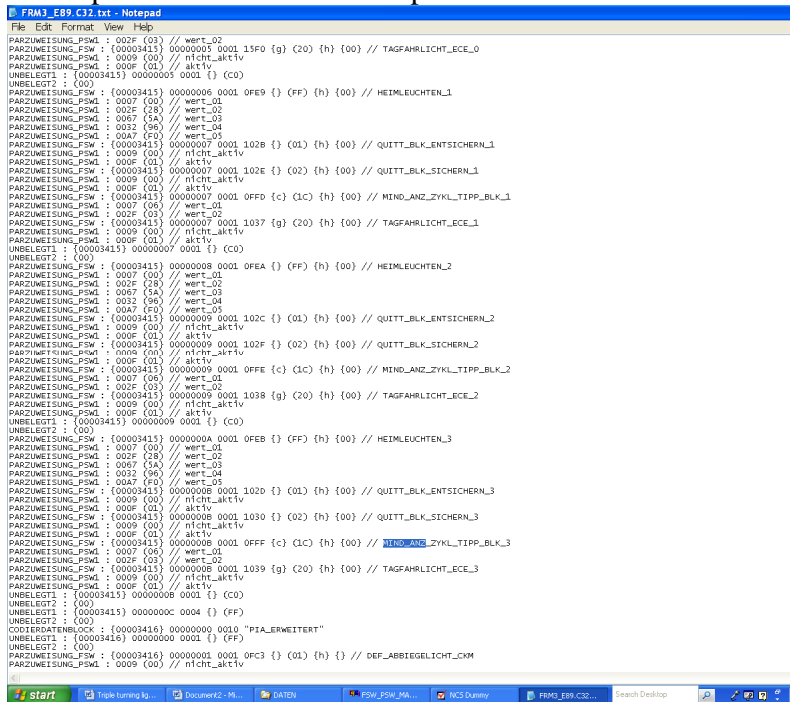
## Save the disassembled file as “ “



## Successfully written the disassembled file



## Now open the text file with notepad



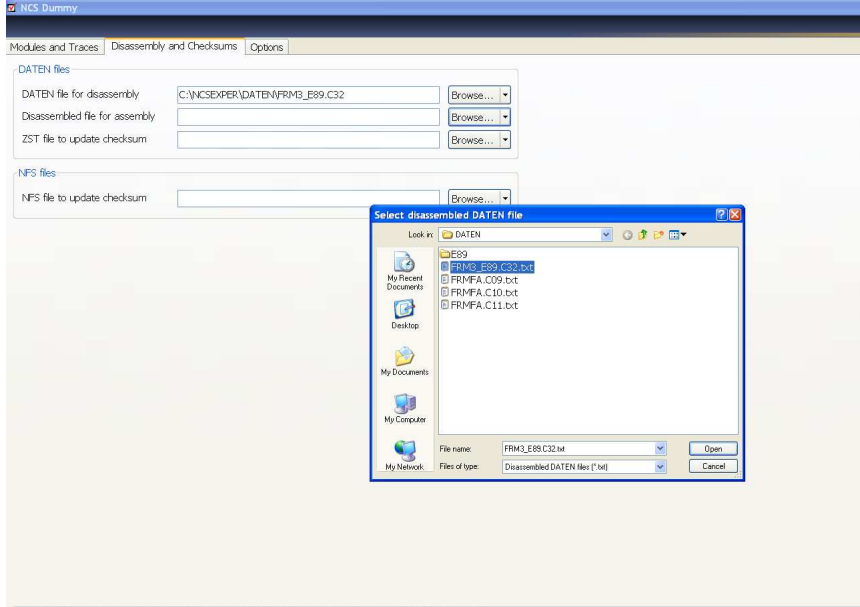
Search all the locations of MIND\_ANZ\_ZYKL\_TPP\_BLK  
 And change the value of wert 1 to your preferred blink count.  
 I have changed to 6.  
 I had 4 occurrences of MIND\_ANZ\_ZYKL\_TPP\_BLK  
 I have changed the wert 1 value to 6 in all 4 places.

```

FRM3_E89_C32.txt - Notepad
File Edit Format View Help
New Ctrl+N (03) // wert_02
Open... Ctrl+O (00) // nicht_aktiv
Save Ctrl+S (01) // aktiv
Save As... (00) // nicht_aktiv
Page Setup... (00) // nicht_aktiv
Print... Ctrl+P (00) // nicht_aktiv
Exit (00) // nicht_aktiv
PARZWEISUNG_PSWL : 000F (01) // aktiv
PARZWEISUNG_PSWL : (00003413) 00000007 0001 102E ( ) (02) (h) (00) // QUITT_BLK_SICHERN_1
PARZWEISUNG_PSWL : 0009 (00) // nicht_aktiv
PARZWEISUNG_PSWL : 000F (03) // aktiv
PARZWEISUNG_PSWL : (00003413) 00000007 0001 0F09 ( ) (FF) (h) (00) // HEIMLEUCHTEN_1
PARZWEISUNG_PSWL : 000F (01) // aktiv
PARZWEISUNG_PSWL : (00003413) 00000007 0001 1028 ( ) (01) (h) (00) // QUITT_BLK_ENTSICHERN_1
PARZWEISUNG_PSWL : 000F (01) // aktiv
PARZWEISUNG_PSWL : (00003413) 00000007 0001 102E ( ) (02) (h) (00) // QUITT_BLK_SICHERN_1
PARZWEISUNG_PSWL : 0009 (00) // nicht_aktiv
PARZWEISUNG_PSWL : 000F (03) // aktiv
PARZWEISUNG_PSWL : (00003413) 00000007 0001 0F0D ( ) (C) (h) (00) // MIND_ANZ_ZYKL_TIPP_BLK_1
PARZWEISUNG_PSWL : 000F (01) // aktiv
PARZWEISUNG_PSWL : (00003413) 00000007 0001 1037 ( ) (02) (h) (00) // TAGFAHRLICHT_ECE_1
PARZWEISUNG_PSWL : 0009 (00) // nicht_aktiv
PARZWEISUNG_PSWL : 000F (01) // aktiv
UNBELEGT1 : (00003413) 00000000 0001 ( ) (C0)
UNBELEGT2 : (00)
PARZWEISUNG_PSWL : (00003413) 00000008 0001 0FEA ( ) (FF) (h) (00) // HEIMLEUCHTEN_2
PARZWEISUNG_PSWL : 0007 (00) // wert_01
PARZWEISUNG_PSWL : 002F (28) // wert_02
PARZWEISUNG_PSWL : 0087 (5A) // wert_03
PARZWEISUNG_PSWL : 0032 (96) // wert_04
PARZWEISUNG_PSWL : 00A7 (F0) // wert_05
PARZWEISUNG_PSWL : (00003413) 00000009 0001 102C ( ) (01) (h) (00) // QUITT_BLK_ENTSICHERN_2
PARZWEISUNG_PSWL : 0009 (00) // nicht_aktiv
PARZWEISUNG_PSWL : 000F (01) // aktiv
PARZWEISUNG_PSWL : (00003413) 00000009 0001 102F ( ) (02) (h) (00) // QUITT_BLK_SICHERN_2
PARZWEISUNG_PSWL : 0009 (00) // nicht_aktiv
PARZWEISUNG_PSWL : 000F (01) // aktiv
PARZWEISUNG_PSWL : (00003413) 00000009 0001 0F0E ( ) (C) (h) (00) // MIND_ANZ_ZYKL_TIPP_BLK_2
PARZWEISUNG_PSWL : 000F (01) // aktiv
PARZWEISUNG_PSWL : (00003413) 00000009 0001 1038 ( ) (02) (h) (00) // TAGFAHRLICHT_ECE_2
PARZWEISUNG_PSWL : 0009 (00) // nicht_aktiv
PARZWEISUNG_PSWL : 000F (01) // aktiv
UNBELEGT1 : (00003413) 00000000 0001 ( ) (C0)
UNBELEGT2 : (00)
PARZWEISUNG_PSWL : (00003413) 0000000A 0001 0F0E ( ) (FF) (h) (00) // HEIMLEUCHTEN_3
PARZWEISUNG_PSWL : 0007 (00) // wert_01
PARZWEISUNG_PSWL : 002F (28) // wert_02
PARZWEISUNG_PSWL : 0087 (5A) // wert_03
PARZWEISUNG_PSWL : 0032 (96) // wert_04
PARZWEISUNG_PSWL : 00A7 (F0) // wert_05
PARZWEISUNG_PSWL : (00003413) 0000000B 0001 102D ( ) (01) (h) (00) // QUITT_BLK_ENTSICHERN_3
PARZWEISUNG_PSWL : 0009 (00) // nicht_aktiv
PARZWEISUNG_PSWL : 000F (01) // aktiv
PARZWEISUNG_PSWL : (00003413) 0000000B 0001 1030 ( ) (02) (h) (00) // QUITT_BLK_SICHERN_3
PARZWEISUNG_PSWL : 0009 (00) // nicht_aktiv
PARZWEISUNG_PSWL : 000F (01) // aktiv
PARZWEISUNG_PSWL : (00003413) 0000000B 0001 0FFF ( ) (C) (h) (00) // MIND_ANZ_ZYKL_TIPP_BLK_3
PARZWEISUNG_PSWL : 000F (01) // aktiv
PARZWEISUNG_PSWL : (00003413) 0000000B 0001 1039 ( ) (02) (h) (00) // TAGFAHRLICHT_ECE_3
PARZWEISUNG_PSWL : 0009 (00) // nicht_aktiv

```

Save the file and close it.

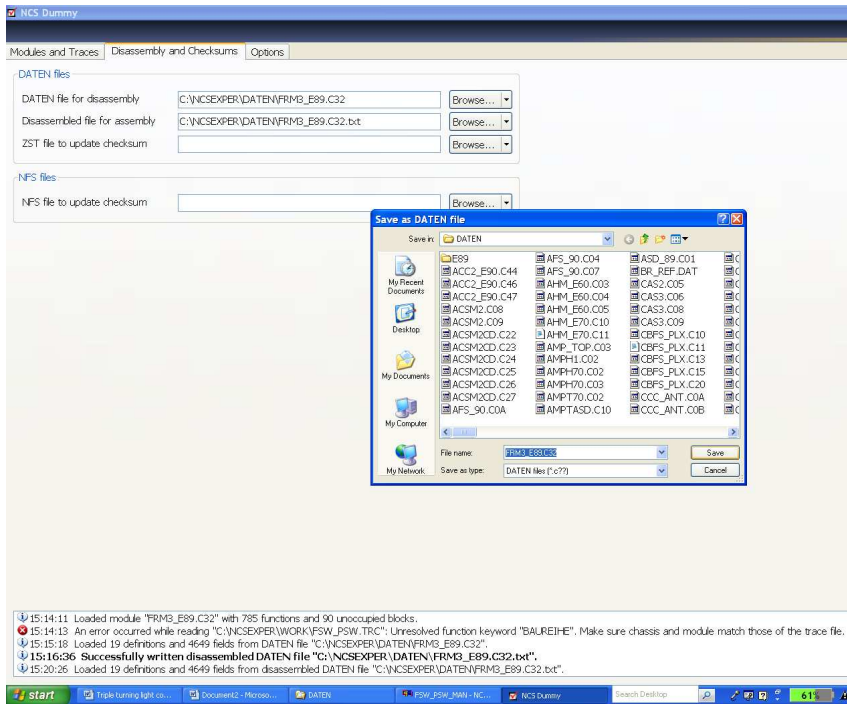


```

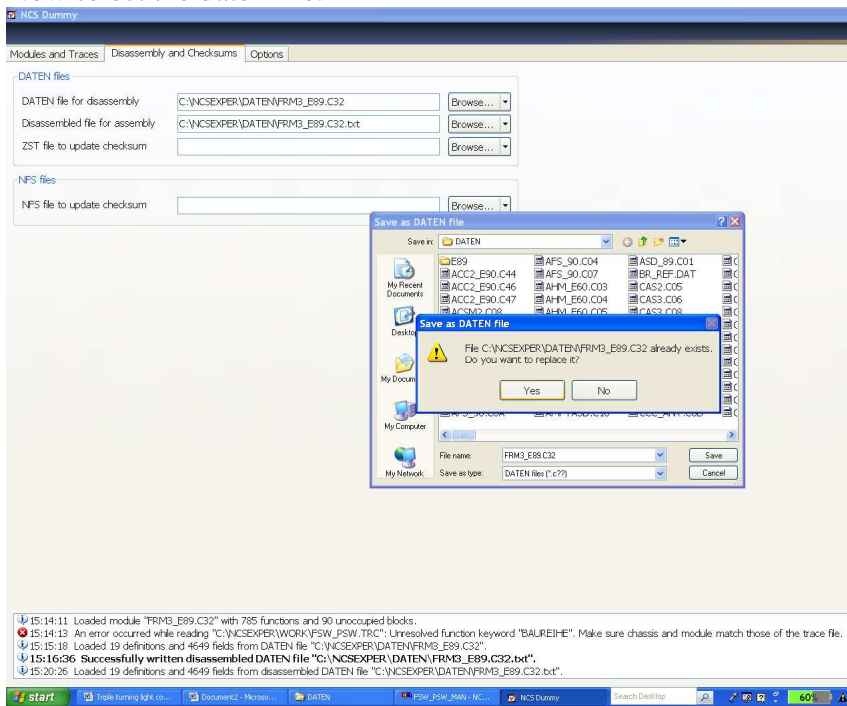
15:12:52 Loaded chassis "E89" (E81, E82, E84, E87, E88, E89, E90, E91, E92 and E93) with 397 modules.
15:14:11 Loaded module "FRM3_E89_C32" with 785 functions and 90 unoccupied blocks.
15:14:13 An error occurred while reading "C:\NCSEXPER\WORK\PSW_TRC": Unresolved function keyword "BAUREIHE". Make sure chassis and module match those of the trace file.
15:15:18 Loaded 19 definitions and 4649 fields from DATEN file "C:\NCSEXPER\DATEN\FRM3_E89_C32".
15:16:36 Successfully written disassembled DATEN file "C:\NCSEXPER\DATEN\FRM3_E89_C32.txt".

```

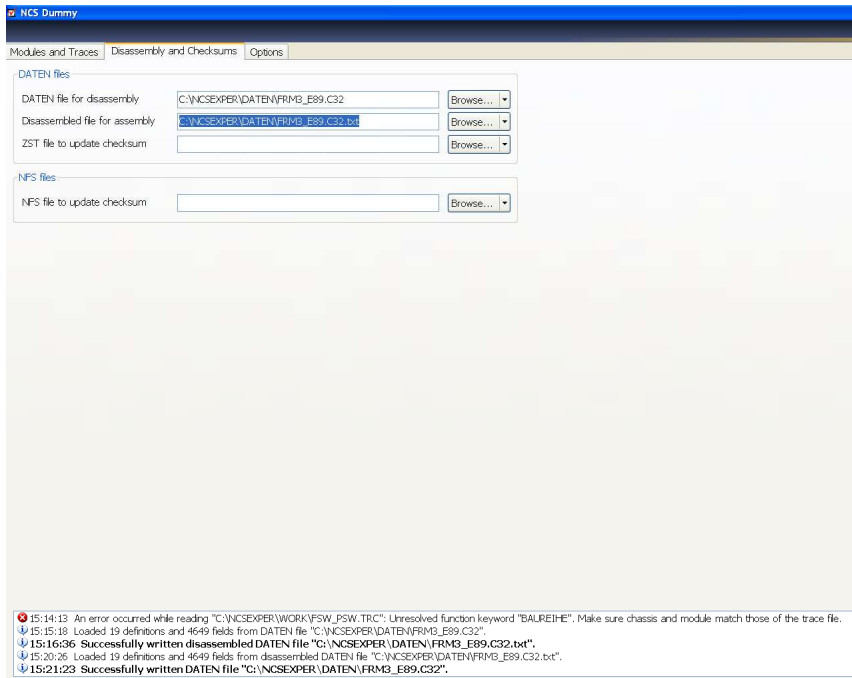
Now select the disassembled file to create the daten file with changes you have made.



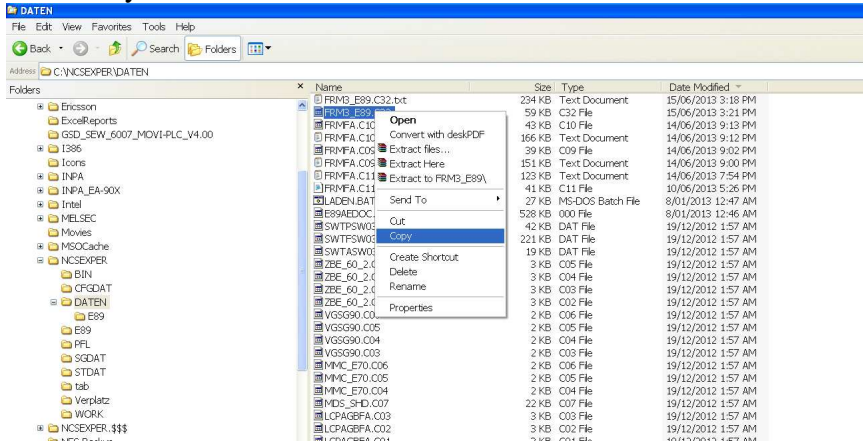
## Now select the daten file.



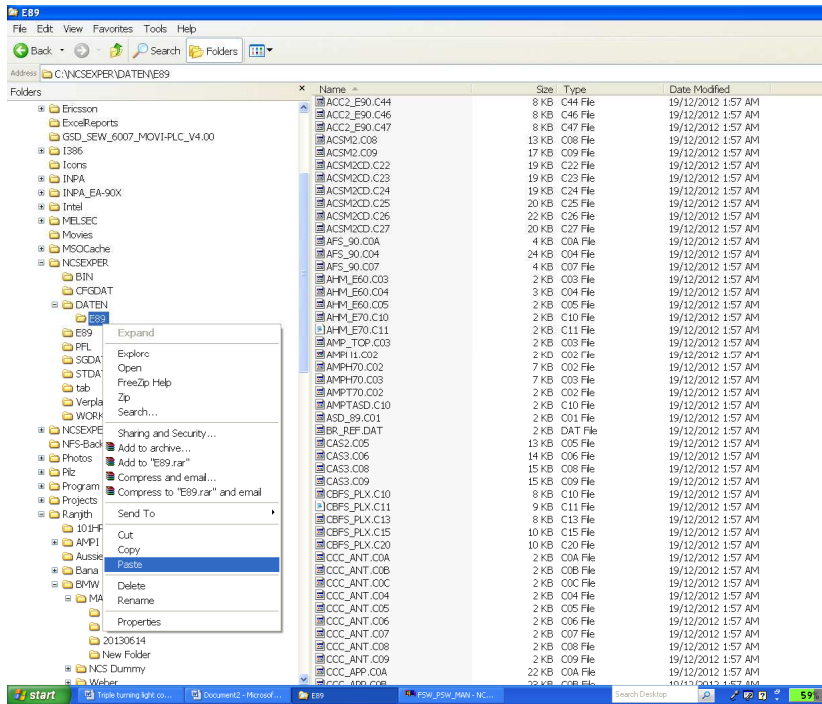
## Yes to replace



## Successfully created the daten file



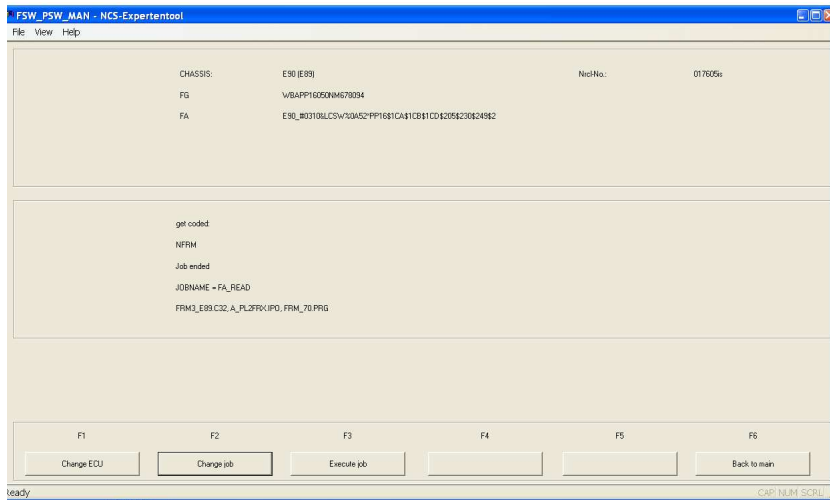
Now copy the edited daten file.



Paste it into NCSEXPER/DATEN/E89 folder.

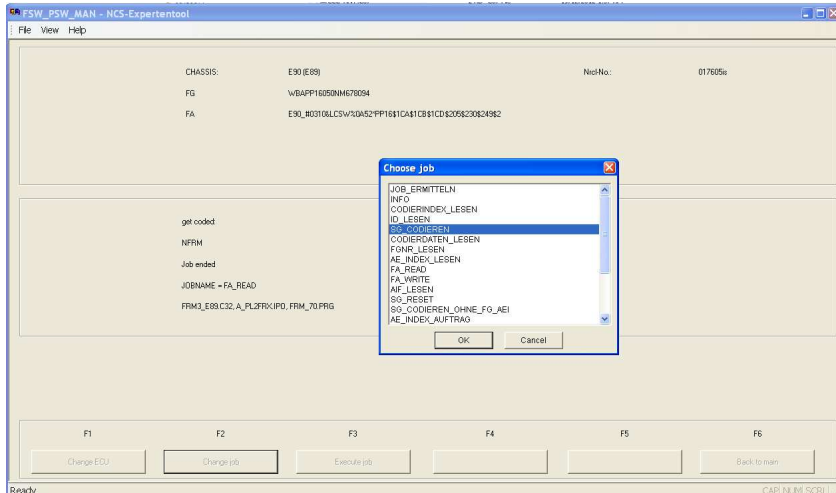
Make a backup of the old file.

If something goes wrong with the new edited file.

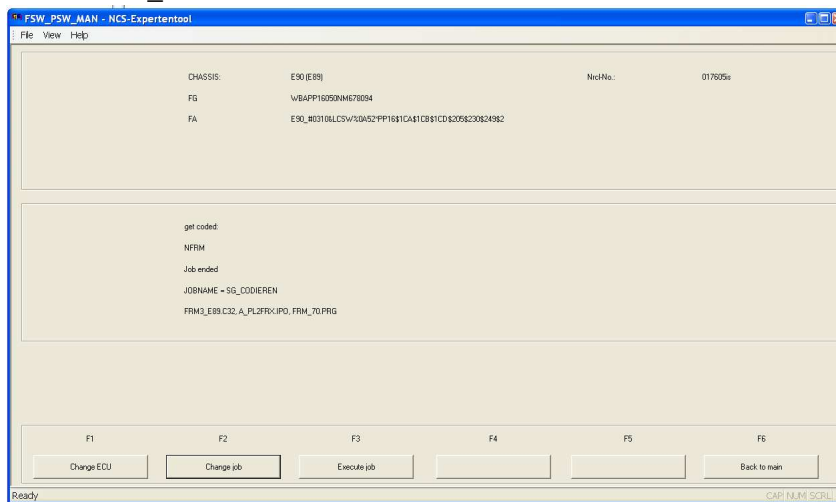


Back to NCSExpert to code the module.

F2 Change Job



Choose SG\_CODEREN



Then F3-Execute.

Turn the Ignition off without touching the signal stalk.

Wait few seconds and test.

Hope it worked for you.